

Arylsulfatase D rabbit pAb

Cat#: orb769067 (Manual)

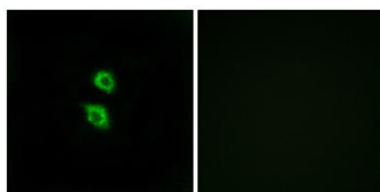
For research use only. Not intended for diagnostic use.

Product Name	Arylsulfatase D rabbit pAb
Host species	Rabbit
Applications	IHC;IF;ELISA
Species Cross-Reactivity	Human;Rat;Mouse;
Recommended dilutions	Immunohistochemistry: 1/100 - 1/300. Immunofluorescence: 1/200 - 1/1000. ELISA: 1/20000. Not yet tested in other applications.
Immunogen	The antiserum was produced against synthesized peptide derived from human ARSD. AA range:331-380
Specificity	Arylsulfatase D Polyclonal Antibody detects endogenous levels of Arylsulfatase D protein.
Formulation	Liquid in PBS containing 50% glycerol, 0.5% BSA and 0.02% sodium azide..
Storage	Store at -20°C. Avoid repeated freeze-thaw cycles.
Protein Name	Arylsulfatase D
Gene Name	ARSD
Cellular localization	Lysosome .
Purification	The antibody was affinity-purified from rabbit antiserum by affinity-chromatography using epitope-specific immunogen.
Clonality	Polyclonal

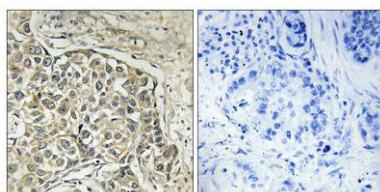
Concentration	1 mg/ml
Observed band	70kD
Human Gene ID	414
Human Swiss-Prot Number	P51689
Alternative Names	ARSD; Arylsulfatase D; ASD

Background

The protein encoded by this gene is a member of the sulfatase family. Sulfatases are essential for the correct composition of bone and cartilage matrix. The encoded protein is posttranslationally glycosylated and localized to the lysosome. This gene is located within a cluster of similar arylsulfatase genes on chromosome X. A related pseudogene has been identified in the pseudoautosomal region of chromosome Y. [provided by RefSeq, Jul 2011],



Immunofluorescence analysis of MCF7 cells, using ARSD Antibody. The picture on the right is blocked with the synthesized peptide.



Immunohistochemistry analysis of paraffin-embedded human lung carcinoma tissue, using ARSD Antibody. The picture on the right is blocked with the synthesized peptide.