

MAGE-A5 rabbit pAb**Cat#: orb769040 (Manual)**

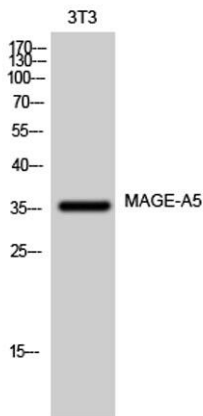
For research use only. Not intended for diagnostic use.

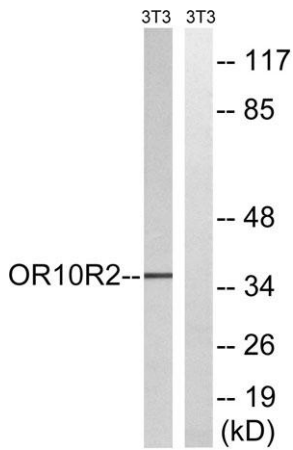
Product Name	MAGE-A5 rabbit pAb
Host species	Rabbit
Applications	WB;ELISA
Species Cross-Reactivity	Human;Rat;Mouse;
Recommended dilutions	Western Blot: 1/500 - 1/2000. ELISA: 1/10000. Not yet tested in other applications.
Immunogen	The antiserum was produced against synthesized peptide derived from human MAGEA5. AA range:68-117
Specificity	MAGE-A5 Polyclonal Antibody detects endogenous levels of MAGE-A5 protein.
Formulation	Liquid in PBS containing 50% glycerol, 0.5% BSA and 0.02% sodium azide..
Storage	Store at -20°C. Avoid repeated freeze-thaw cycles.
Protein Name	Melanoma-associated antigen 5
Gene Name	MAGEA5
Cellular localization	
Purification	The antibody was affinity-purified from rabbit antiserum by affinity-chromatography using epitope-specific immunogen.
Clonality	Polyclonal

Concentration	1 mg/ml
Observed band	36kD
Human Gene ID	4104
Human Swiss-Prot Number	P43359
Alternative Names	MAGEA5; MAGE5; Melanoma-associated antigen 5; Cancer/testis antigen 1.5; CT1.5; MAGE-5 antigen

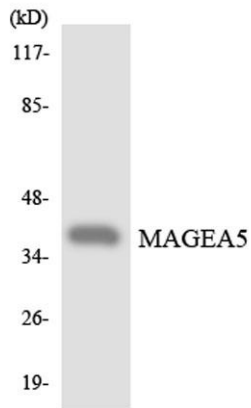
Background

This gene is a member of the MAGEA gene family. The members of this family encode proteins with 50 to 80% sequence identity to each other. The promoters and first exons of the MAGEA genes show considerable variability, suggesting that the existence of this gene family enables the same function to be expressed under different transcriptional controls. The MAGEA genes are clustered at chromosomal location Xq28. They have been implicated in some hereditary disorders, such as dyskeratosis congenita. This MAGEA gene encodes a protein that is C-terminally truncated compared to other family members, and this gene can be alternatively interpreted to be a pseudogene. The protein is represented in this Gene record in accordance with the assumed protein-coding status defined in the literature. Read-through transcription exists between this gene and the upstream melanoma antigen family A, 10 (MAGEA10) gene. [pr

**Western Blot analysis of 3T3 cells using MAGE-A5 Polyclonal Antibody**



Western blot analysis of lysates from NIH/3T3 cells, using MAGEA5 Antibody. The lane on the right is blocked with the synthesized peptide.



Western blot analysis of the lysates from K562 cells using MAGEA5 antibody.