

**Lyl-1 rabbit pAb****Cat#: orb769019 (Manual)**

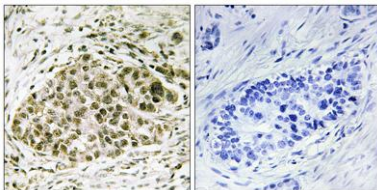
For research use only. Not intended for diagnostic use.

<b>Product Name</b>	Lyl-1 rabbit pAb
<b>Host species</b>	Rabbit
<b>Applications</b>	IHC;IF;ELISA
<b>Species Cross-Reactivity</b>	Human;Mouse;Rat
<b>Recommended dilutions</b>	Immunohistochemistry: 1/100 - 1/300. ELISA: 1/10000. Not yet tested in other applications.
<b>Immunogen</b>	The antiserum was produced against synthesized peptide derived from human Lyl-1. AA range:151-200
<b>Specificity</b>	Lyl-1 Polyclonal Antibody detects endogenous levels of Lyl-1 protein.
<b>Formulation</b>	Liquid in PBS containing 50% glycerol, 0.5% BSA and 0.02% sodium azide..
<b>Storage</b>	Store at -20°C. Avoid repeated freeze-thaw cycles.
<b>Protein Name</b>	Protein lyl-1
<b>Gene Name</b>	LYL1
<b>Cellular localization</b>	Nucleus .
<b>Purification</b>	The antibody was affinity-purified from rabbit antiserum by affinity-chromatography using epitope-specific immunogen.
<b>Clonality</b>	Polyclonal

<b>Concentration</b>	1 mg/ml
<b>Observed band</b>	
<b>Human Gene ID</b>	4066
<b>Human Swiss-Prot Number</b>	P12980
<b>Alternative Names</b>	LYL1; BHLHA18; Protein lyl-1; Class A basic helix-loop-helix protein 18; bHLHa18; Lymphoblastic leukemia-derived sequence 1

## Background

This gene represents a basic helix-loop-helix transcription factor. The encoded protein may play roles in blood vessel maturation and hematopoiesis. A translocation between this locus and the T cell receptor beta locus (GeneID 6957) on chromosome 7 has been associated with acute lymphoblastic leukemia. [provided by RefSeq, Sep 2010],



**Immunohistochemistry analysis of paraffin-embedded human lung carcinoma tissue, using Lyl-1 Antibody. The picture on the right is blocked with the synthesized peptide.**