

SPINK6 rabbit pAb**Cat#: orb769014 (Manual)**

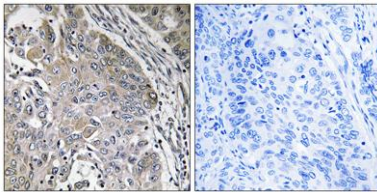
For research use only. Not intended for diagnostic use.

Product Name	SPINK6 rabbit pAb
Host species	Rabbit
Applications	IHC;IF;ELISA
Species Cross-Reactivity	Human;Rat;Mouse;
Recommended dilutions	Immunohistochemistry: 1/100 - 1/300. ELISA: 1/40000. Not yet tested in other applications.
Immunogen	The antiserum was produced against synthesized peptide derived from human SPINK6. AA range:13-62
Specificity	SPINK6 Polyclonal Antibody detects endogenous levels of SPINK6 protein.
Formulation	Liquid in PBS containing 50% glycerol, 0.5% BSA and 0.02% sodium azide..
Storage	Store at -20°C. Avoid repeated freeze-thaw cycles.
Protein Name	Serine protease inhibitor Kazal-type 6
Gene Name	SPINK6
Cellular localization	Secreted .
Purification	The antibody was affinity-purified from rabbit antiserum by affinity-chromatography using epitope-specific immunogen.
Clonality	Polyclonal

Concentration	1 mg/ml
Observed band	
Human Gene ID	404203
Human Swiss-Prot Number	Q6UWN8
Alternative Names	SPINK6; Serine protease inhibitor Kazal-type 6; Kallikrein inhibitor

Background

The protein encoded by this gene is a Kazal-type serine protease inhibitor that acts on kallikrein-related peptidases in the skin. Two transcript variants the same protein have been found for this gene. [provided by RefSeq, Aug 2010],



Immunohistochemistry analysis of paraffin-embedded human lung carcinoma, using SPINK6 Antibody. The picture on the right is blocked with the synthesized peptide.