

LRP3 rabbit pAb

Cat#: orb769013 (Manual)

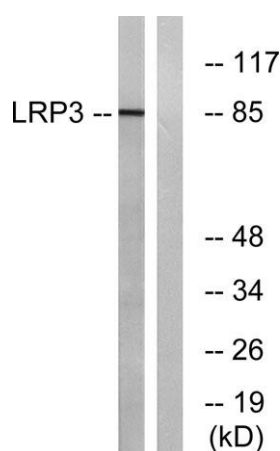
For research use only. Not intended for diagnostic use.

Product Name	LRP3 rabbit pAb
Host species	Rabbit
Applications	WB;IHC
Species Cross-Reactivity	Human;Mouse;Rat
Recommended dilutions	WB 1:500-2000;IHC-p 1:50-300
Immunogen	The antiserum was produced against synthesized peptide derived from human LRP3. AA range:17-66
Specificity	LRP3 Polyclonal Antibody detects endogenous levels of LRP3 protein.
Formulation	Liquid in PBS containing 50% glycerol, 0.5% BSA and 0.02% sodium azide..
Storage	Store at -20°C. Avoid repeated freeze-thaw cycles.
Protein Name	Low-density lipoprotein receptor-related protein 3
Gene Name	LRP3
Cellular localization	Membrane ; Single-pass type I membrane protein . Membrane, coated pit .
Purification	The antibody was affinity-purified from rabbit antiserum by affinity-chromatography using epitope-specific immunogen.
Clonality	Polyclonal

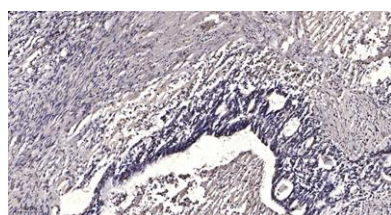
Concentration	1 mg/ml
Observed band	80kD
Human Gene ID	4037
Human Swiss-Prot Number	O75074
Alternative Names	LRP3; Low-density lipoprotein receptor-related protein 3; LRP-3; 105 kDa low-density lipoprotein receptor-related protein; hLRp105

Background

function:Probable receptor, which may be involved in the internalization of lipophilic molecules and/or signal transduction. Its precise role is however unclear, since it does not bind to very low density lipoprotein (VLDL) or to LRPAP1 in vitro.,similarity:Belongs to the LDLR family.,similarity:Contains 2 CUB domains.,similarity:Contains 4 LDL-receptor class A domains.,subunit:Binds GGA1 and GGA2.,tissue specificity:Widely expressed. Highly expressed in skeletal muscle and ovary. Expressed at intermediate level in heart, brain, liver, pancreas, prostate and small intestine. Weakly expressed in testis, colon and leukocyte.,



Western blot analysis of lysates from RAW264.7 cells, using LRP3 Antibody. The lane on the right is blocked with the synthesized peptide.



Immunohistochemical analysis of paraffin-embedded human Gastric adenocarcinoma. 1, Antibody was diluted at 1:200(4° overnight). 2, Tris-EDTA,pH9.0 was used for antigen retrieval. 3,Secondary antibody was diluted at 1:200(room temperature, 45min).



Explore. Bioreagents.

www.biorbyt.com

Biorbyt Ltd
7 Signet Court, Swann Road, Cambridge, CB5 8LA. United Kingdom
Email: info@biorbyt.com | Phone: +44 (0)1223 859-353 | Fax: +44 (0)1223 280-240

Biorbyt LLC
68 TW Alexander Drive, Durham, NC 27709. United States
Email: info@biorbyt.com | Phone: +1 (415) 906-5211 | Fax: +1 (415) 651-8558