

LHR rabbit pAb

Cat#: orb768985 (Manual)

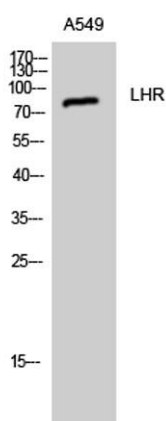
For research use only. Not intended for diagnostic use.

Product Name	LHR rabbit pAb
Host species	Rabbit
Applications	WB;ELISA;IHC
Species Cross-Reactivity	Human;Mouse;Rat
Recommended dilutions	WB 1:500-2000;IHC-p 1:50-300; ELISA 2000-20000
Immunogen	The antiserum was produced against synthesized peptide derived from human LSHR. AA range:621-670
Specificity	LHR Polyclonal Antibody detects endogenous levels of LHR protein.
Formulation	Liquid in PBS containing 50% glycerol, 0.5% BSA and 0.02% sodium azide..
Storage	Store at -20°C. Avoid repeated freeze-thaw cycles.
Protein Name	Lutropin-choriogonadotropic hormone receptor
Gene Name	LHCGR
Cellular localization	Cell membrane ; Multi-pass membrane protein .
Purification	The antibody was affinity-purified from rabbit antiserum by affinity-chromatography using epitope-specific immunogen.
Clonality	Polyclonal

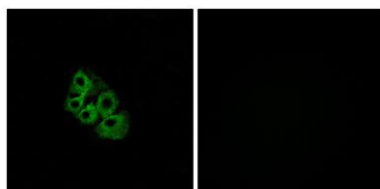
Concentration	1 mg/ml
Observed band	80kD
Human Gene ID	3973
Human Swiss-Prot Number	P22888
Alternative Names	LHCGR; LCGR; LGR2; LHRHR; Lutropin-choriogonadotropic hormone receptor; LH/CG-R; Luteinizing hormone receptor; LHR; LSH-R

Background

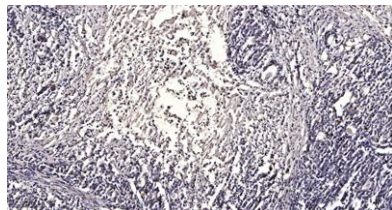
This gene encodes the receptor for both luteinizing hormone and choriogonadotropin. This receptor belongs to the G-protein coupled receptor 1 family, and its activity is mediated by G proteins which activate adenylate cyclase. Mutations in this gene result in disorders of male secondary sexual character development, including familial male precocious puberty, also known as testotoxicosis, hypogonadotropic hypogonadism, Leydig cell adenoma with precocious puberty, and male pseudohermaphroditism with Leydig cell hypoplasia. [provided by RefSeq, Jul 2008],



Western Blot analysis of A549 cells using LHR Polyclonal Antibody



Immunofluorescence analysis of A549 cells, using LSHR Antibody. The picture on the right is blocked with the synthesized peptide.



Immunohistochemical analysis of paraffin-embedded human Gastric adenocarcinoma. 1, Antibody was diluted at 1:200(4° overnight). 2, Tris-EDTA,pH9.0 was used for antigen retrieval. 3,Secondary antibody was diluted at 1:200(room temperature, 45min).