

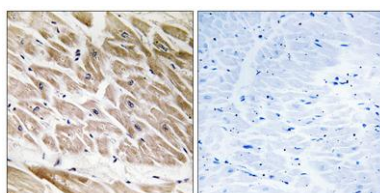
ARHGAP1 rabbit pAb**Cat#: orb768961 (Manual)**

For research use only. Not intended for diagnostic use.

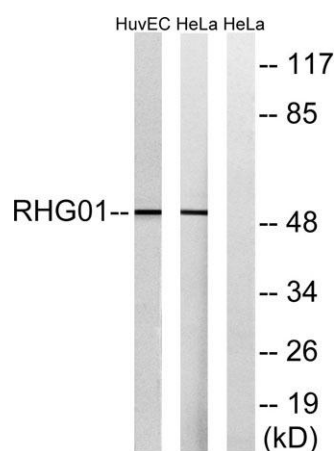
Product Name	ARHGAP1 rabbit pAb
Host species	Rabbit
Applications	WB;IHC;IF;ELISA
Species Cross-Reactivity	Human;Mouse
Recommended dilutions	Western Blot: 1/500 - 1/2000. Immunohistochemistry: 1/100 - 1/300. ELISA: 1/10000. Not yet tested in other applications.
Immunogen	The antiserum was produced against synthesized peptide derived from human RHG1. AA range:189-238
Specificity	ARHGAP1 Polyclonal Antibody detects endogenous levels of ARHGAP1 protein.
Formulation	Liquid in PBS containing 50% glycerol, 0.5% BSA and 0.02% sodium azide..
Storage	Store at -20°C. Avoid repeated freeze-thaw cycles.
Protein Name	Rho GTPase-activating protein 1
Gene Name	ARHGAP1
Cellular localization	Cytoplasm.
Purification	The antibody was affinity-purified from rabbit antiserum by affinity-chromatography using epitope-specific immunogen.
Clonality	Polyclonal

Concentration	1 mg/ml
Observed band	50kD
Human Gene ID	392
Human Swiss-Prot Number	Q07960
Alternative Names	ARHGAP1; CDC42GAP; RHOGAP1; Rho GTPase-activating protein 1; CDC42 GTPase-activating protein; GTPase-activating protein rhoOGAP; Rho-related small GTPase protein activator; Rho-type GTPase-activating protein 1; p50-RhoGAP

Background This gene encodes a member of a large family of proteins that activate Rho-type guanosine triphosphate (GTP) metabolizing enzymes. The encoded protein contains a SRC homology 3 domain and interacts with Bcl-2-associated protein family members. [provided by RefSeq, Aug 2012],



Immunohistochemistry analysis of paraffin-embedded human heart tissue, using RHG1 Antibody. The picture on the right is blocked with the synthesized peptide.



Western blot analysis of lysates from HeLa and HUVEC cells, using RHG1 Antibody. The lane on the right is blocked with the synthesized peptide.