

**BSX rabbit pAb****Cat#: orb768942 (Manual)**

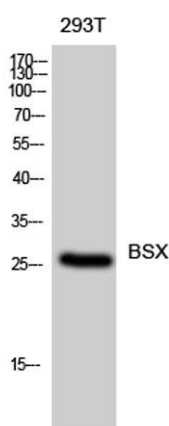
For research use only. Not intended for diagnostic use.

<b>Product Name</b>	BSX rabbit pAb
<b>Host species</b>	Rabbit
<b>Applications</b>	WB;ELISA
<b>Species Cross-Reactivity</b>	Human;Mouse;Rat
<b>Recommended dilutions</b>	Western Blot: 1/500 - 1/2000. ELISA: 1/5000. Not yet tested in other applications.
<b>Immunogen</b>	Synthesized peptide derived from BSX . at AA range: 150-230
<b>Specificity</b>	BSX Polyclonal Antibody detects endogenous levels of BSX protein.
<b>Formulation</b>	Liquid in PBS containing 50% glycerol, 0.5% BSA and 0.02% sodium azide..
<b>Storage</b>	Store at -20°C. Avoid repeated freeze-thaw cycles.
<b>Protein Name</b>	Brain-specific homeobox protein homolog
<b>Gene Name</b>	BSX
<b>Cellular localization</b>	Nucleus .
<b>Purification</b>	The antibody was affinity-purified from rabbit antiserum by affinity-chromatography using epitope-specific immunogen.
<b>Clonality</b>	Polyclonal

<b>Concentration</b>	1 mg/ml
<b>Observed band</b>	26kD
<b>Human Gene ID</b>	390259
<b>Human Swiss-Prot Number</b>	Q3C1V8
<b>Alternative Names</b>	BSX; BSX1; Brain-specific homeobox protein homolog

### Background

function:DNA binding protein that function as transcriptional activator. Is essential for normal postnatal growth and nursing. Is an essential factor for neuronal neuropeptide Y and agouti-related peptide function and locomotory behavior in the control of energy balance.,online information:Of fidgets and food -Issue 85 of August 2007,similarity:Belongs to the distal-less homeobox family.,similarity:Contains 1 homeobox DNA-binding domain.,



**Western Blot analysis of 293T cells using BSX Polyclonal Antibody diluted at 1:500**