

Rho B rabbit pAb

Cat#: orb768915 (Manual)

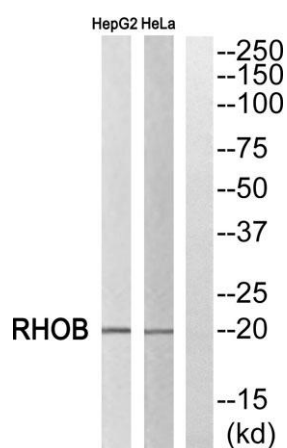
For research use only. Not intended for diagnostic use.

Product Name	Rho B rabbit pAb
Host species	Rabbit
Applications	WB;ELISA;IHC
Species Cross-Reactivity	Human;Mouse;Rat
Recommended dilutions	WB 1:500-2000;IHC-p 1:50-300; ELISA 2000-20000
Immunogen	The antiserum was produced against synthesized peptide derived from human RHOB. AA range:99-148
Specificity	Rho B Polyclonal Antibody detects endogenous levels of Rho B protein.
Formulation	Liquid in PBS containing 50% glycerol, 0.5% BSA and 0.02% sodium azide..
Storage	Store at -20°C. Avoid repeated freeze-thaw cycles.
Protein Name	Rho-related GTP-binding protein RhoB
Gene Name	RHOB
Cellular localization	Late endosome membrane; Lipid-anchor. Cell membrane; Lipid-anchor. Nucleus. Cleavage furrow. Late endosomal membrane (geranylgeranylated form). Plasma membrane (farnesylated form). Also detected at the nuclear margin and in the nucleus. Translocates to the equatorial region before furrow formation in a ECT2-dependent manner.
Purification	The antibody was affinity-purified from rabbit antiserum by affinity-chromatography using epitope-specific immunogen.

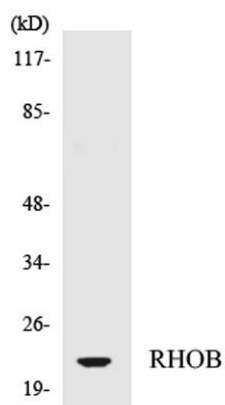
Clonality	Polyclonal
Concentration	1 mg/ml
Observed band	22kD
Human Gene ID	388
Human Swiss-Prot Number	P62745
Alternative Names	RHOB; ARH6; ARHB; Rho-related GTP-binding protein RhoB; Rho cDNA clone 6; h6

Background

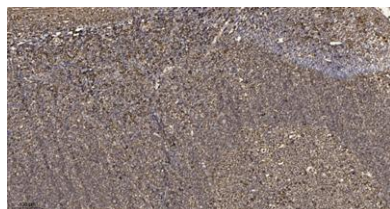
function:Mediates apoptosis in neoplastically transformed cells after DNA damage. Not essential for development but affects cell adhesion and growth factor signaling in transformed cells. Plays a negative role in tumorigenesis as deletion causes tumor formation. Involved in intracellular protein trafficking of a number of proteins. Targets PKN1 to endosomes and is involved in trafficking of the EGF receptor from late endosomes to lysosomes. Also required for stability and nuclear trafficking of AKT1/AKT which promotes endothelial cell survival during vascular development.,**miscellaneous:**RHOB is one of the targets of farnesyltransferase inhibitors which are currently under investigation as cancer therapeutics. These elevate the levels of geranylgeranylated RHOB and cause mislocalization, leading to apoptosis and antineoplastic effects.,**PTM:**Prenylation specifies the subcellular location of RHOB. The farnesylated form is localized to the plasma membrane while the geranylgeranylated form is localized to the endosome.,**similarity:**Belongs to the small GTPase superfamily. Rho family.,**subcellular location:**Late endosomal membrane (geranylgeranylated form). Plasma membrane (farnesylated form). Also detected at the nuclear margin and in the nucleus.,**subunit:**Binds ROCK1 and ROCK2. Also binds PKN1/PRK1. Interacts with ARGGEF3, RTKN and AKAP13.,



Western blot analysis of RHOB Antibody. The lane on the right is blocked with the RHOB peptide.



Western blot analysis of the lysates from HepG2 cells using RHOB antibody.



Immunohistochemical analysis of paraffin-embedded human tonsil. 1, Antibody was diluted at 1:200(4° overnight). 2, Tris-EDTA,pH9.0 was used for antigen retrieval. 3,Secondary antibody was diluted at 1:200(room temperature, 45min).