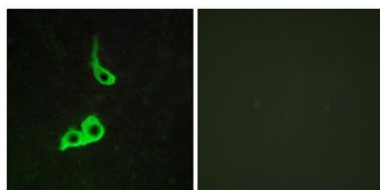


GPR153 rabbit pAb**Cat#: orb768911 (Manual)**

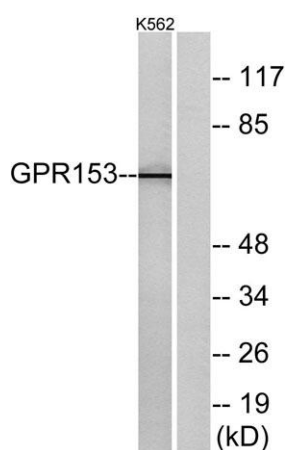
For research use only. Not intended for diagnostic use.

Product Name	GPR153 rabbit pAb
Host species	Rabbit
Applications	WB;IHC;IF;ELISA
Species Cross-Reactivity	Human;Mouse;Rat
Recommended dilutions	Western Blot: 1/500 - 1/2000. Immunohistochemistry: 1/100 - 1/300. Immunofluorescence: 1/200 - 1/1000. ELISA: 1/10000. Not yet tested in other applications.
Immunogen	The antiserum was produced against synthesized peptide derived from human GPR153. AA range:195-244
Specificity	GPR153 Polyclonal Antibody detects endogenous levels of GPR153 protein.
Formulation	Liquid in PBS containing 50% glycerol, 0.5% BSA and 0.02% sodium azide..
Storage	Store at -20°C. Avoid repeated freeze-thaw cycles.
Protein Name	Probable G-protein coupled receptor 153
Gene Name	GPR153
Cellular localization	Cell membrane; Multi-pass membrane protein.
Purification	The antibody was affinity-purified from rabbit antiserum by affinity-chromatography using epitope-specific immunogen.
Clonality	Polyclonal

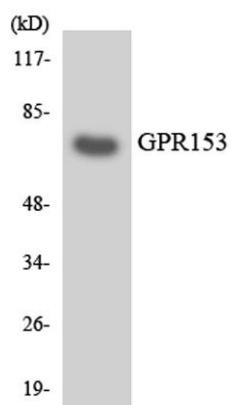
Concentration	1 mg/ml
Observed band	65kD
Human Gene ID	387509
Human Swiss-Prot Number	Q6NV75
Alternative Names	GPR153; PGR1; Probable G-protein coupled receptor 153; G-protein coupled receptor PGR1
Background	function:Orphan receptor.,similarity:Belongs to the G-protein coupled receptor 1 family.,



Immunofluorescence analysis of LOVO cells, using GPR153 Antibody. The picture on the right is blocked with the synthesized peptide.



Western blot analysis of lysates from K562 cells, using GPR153 Antibody. The lane on the right is blocked with the synthesized peptide.



Western blot analysis of the lysates from HepG2 cells using GPR153 antibody.