

Cleaved-Kininogen-1 HC (K380) rabbit pAb

Cat#: orb768902 (Manual)

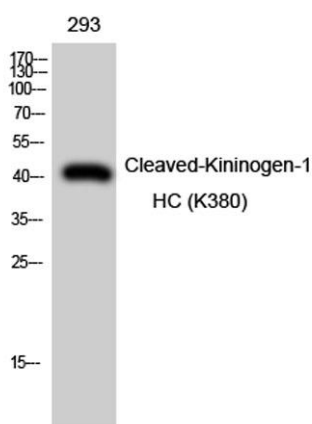
For research use only. Not intended for diagnostic use.

Product Name	Cleaved-Kininogen-1 HC (K380) rabbit pAb
Host species	Rabbit
Applications	WB;ELISA
Species Cross-Reactivity	Human;Rat;Mouse;
Recommended dilutions	Western Blot: 1/500 - 1/2000. ELISA: 1/10000. Not yet tested in other applications.
Immunogen	Synthesized peptide derived from Cleaved-Kininogen-1 HC (K380) . at AA range: 300-380
Specificity	Cleaved-Kininogen-1 HC (K380) Polyclonal Antibody detects endogenous levels of fragment of activated Kininogen-1 HC protein resulting from cleavage adjacent to K380.
Formulation	Liquid in PBS containing 50% glycerol, 0.5% BSA and 0.02% sodium azide..
Storage	Store at -20°C. Avoid repeated freeze-thaw cycles.
Protein Name	Kininogen-1
Gene Name	KNG1
Cellular localization	Secreted, extracellular space.
Purification	The antibody was affinity-purified from rabbit antiserum by affinity-chromatography using epitope-specific immunogen.
Clonality	Polyclonal

Concentration	1 mg/ml
Observed band	41kD
Human Gene ID	3827
Human Swiss-Prot Number	P01042
Alternative Names	KNG1; BDK; KNG; Kininogen-1; Alpha-2-thiol proteinase inhibitor; Fitzgerald factor; High molecular weight kininogen; HMWK; Williams-Fitzgerald-Flaujeac factor

Background

This gene uses alternative splicing to generate two different proteins- high molecular weight kininogen (HMWK) and low molecular weight kininogen (LMWK). HMWK is essential for blood coagulation and assembly of the kallikrein-kinin system. Also, bradykinin, a peptide causing numerous physiological effects, is released from HMWK. Bradykinin also functions as an antimicrobial peptide with antibacterial and antifungal activity. In contrast to HMWK, LMWK is not involved in blood coagulation. Three transcript variants encoding different isoforms have been found for this gene.[provided by RefSeq, Nov 2014],



Western Blot analysis of 293 cells using Cleaved-Kininogen-1 HC (K380) Polyclonal Antibody