

KIR3.3 rabbit pAb**Cat#: orb768883 (Manual)**

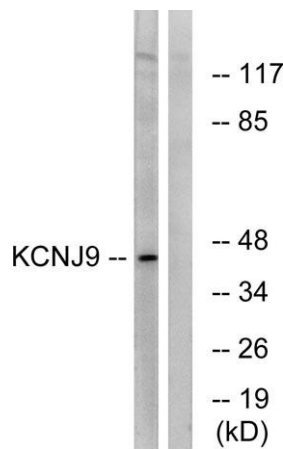
For research use only. Not intended for diagnostic use.

Product Name	KIR3.3 rabbit pAb
Host species	Rabbit
Applications	WB;IHC;IF;ELISA
Species Cross-Reactivity	Human;Mouse;Rat
Recommended dilutions	Western Blot: 1/500 - 1/2000. Immunohistochemistry: 1/100 - 1/300. ELISA: 1/40000. Not yet tested in other applications.
Immunogen	The antiserum was produced against synthesized peptide derived from human KCNJ9. AA range:61-110
Specificity	KIR3.3 Polyclonal Antibody detects endogenous levels of KIR3.3 protein.
Formulation	Liquid in PBS containing 50% glycerol, 0.5% BSA and 0.02% sodium azide..
Storage	Store at -20°C. Avoid repeated freeze-thaw cycles.
Protein Name	G protein-activated inward rectifier potassium channel 3
Gene Name	KCNJ9
Cellular localization	Membrane; Multi-pass membrane protein.
Purification	The antibody was affinity-purified from rabbit antiserum by affinity-chromatography using epitope-specific immunogen.
Clonality	Polyclonal

Concentration	1 mg/ml
Observed band	44kD
Human Gene ID	3765
Human Swiss-Prot Number	Q92806
Alternative Names	KCNJ9; GIRK3; G protein-activated inward rectifier potassium channel 3; GIRK-3; Inward rectifier K(+) channel Kir3.3; Potassium channel; inwardly rectifying subfamily J member 9

Background

Potassium channels are present in most mammalian cells, where they participate in a wide range of physiologic responses. The protein encoded by this gene is an integral membrane protein and inward-rectifier type potassium channel. The encoded protein, which has a greater tendency to allow potassium to flow into a cell rather than out of a cell, is controlled by G-proteins. It associates with another G-protein-activated potassium channel to form a heteromultimeric pore-forming complex. [provided by RefSeq, Jul 2008],



Western blot analysis of lysates from LOVO cells, using KCNJ9 Antibody. The lane on the right is blocked with the synthesized peptide.