

KCNF1 rabbit pAb**Cat#: orb768875 (Manual)**

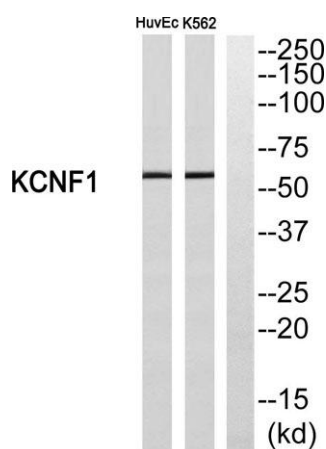
For research use only. Not intended for diagnostic use.

Product Name	KCNF1 rabbit pAb
Host species	Rabbit
Applications	WB;ELISA;IHC
Species Cross-Reactivity	Human;Mouse
Recommended dilutions	WB 1:500-2000;IHC-p 1:50-300; ELISA 2000-20000
Immunogen	The antiserum was produced against synthesized peptide derived from human KCNF1. AA range:191-240
Specificity	KCNF1 Polyclonal Antibody detects endogenous levels of KCNF1 protein.
Formulation	Liquid in PBS containing 50% glycerol, 0.5% BSA and 0.02% sodium azide..
Storage	Store at -20°C. Avoid repeated freeze-thaw cycles.
Protein Name	Potassium voltage-gated channel subfamily F member 1
Gene Name	KCNF1
Cellular localization	Membrane; Multi-pass membrane protein.
Purification	The antibody was affinity-purified from rabbit antiserum by affinity-chromatography using epitope-specific immunogen.
Clonality	Polyclonal

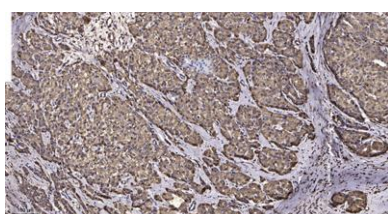
Concentration	1 mg/ml
Observed band	55kD
Human Gene ID	3754
Human Swiss-Prot Number	Q9H3M0
Alternative Names	KCNF1; Potassium voltage-gated channel subfamily F member 1; Voltage-gated potassium channel subunit Kv5.1; kH1

Background

Voltage-gated potassium (Kv) channels represent the most complex class of voltage-gated ion channels from both functional and structural standpoints. Their diverse functions include regulating neurotransmitter release, heart rate, insulin secretion, neuronal excitability, epithelial electrolyte transport, smooth muscle contraction, and cell volume. This gene encodes a member of the potassium channel, voltage-gated, subfamily F. This gene is intronless and expressed in all tissues tested, including the heart, skeletal muscle, brain, kidney, and pancreas. [provided by RefSeq, Jul 2008],



Western blot analysis of KCNF1 Antibody. The lane on the right is blocked with the KCNF1 peptide.



Immunohistochemical analysis of paraffin-embedded human liver cancer. 1, Antibody was diluted at 1:200(4° overnight). 2, Tris-EDTA,pH9.0 was used for antigen retrieval. 3,Secondary antibody was diluted at 1:200(room temperature, 45min).



Explore. Bioreagents.

www.biorbyt.com