

NDUFS7 rabbit pAb**Cat#: orb768864 (Manual)**

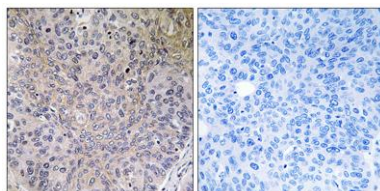
For research use only. Not intended for diagnostic use.

Product Name	NDUFS7 rabbit pAb
Host species	Rabbit
Applications	IHC;IF;ELISA
Species Cross-Reactivity	Human;Mouse;Rat
Recommended dilutions	Immunohistochemistry: 1/100 - 1/300. ELISA: 1/40000. Not yet tested in other applications.
Immunogen	The antiserum was produced against synthesized peptide derived from human NDUFS7. AA range:164-213
Specificity	NDUFS7 Polyclonal Antibody detects endogenous levels of NDUFS7 protein.
Formulation	Liquid in PBS containing 50% glycerol, 0.5% BSA and 0.02% sodium azide..
Storage	Store at -20°C. Avoid repeated freeze-thaw cycles.
Protein Name	NADH dehydrogenase [ubiquinone] iron-sulfur protein 7 mitochondrial
Gene Name	NDUFS7
Cellular localization	Mitochondrion inner membrane ; Peripheral membrane protein ; Matrix side .
Purification	The antibody was affinity-purified from rabbit antiserum by affinity-chromatography using epitope-specific immunogen.
Clonality	Polyclonal

Concentration	1 mg/ml
Observed band	
Human Gene ID	374291
Human Swiss-Prot Number	O75251
Alternative Names	NDUFS7; NADH dehydrogenase [ubiquinone] iron-sulfur protein 7; mitochondrial; Complex I-20kD; CI-20kD; NADH-ubiquinone oxidoreductase 20 kDa subunit; PSST subunit

Background

This gene encodes a protein that is a subunit of one of the complexes that forms the mitochondrial respiratory chain. This protein is one of over 40 subunits found in complex I, the nicotinamide adenine dinucleotide (NADH):ubiquinone oxidoreductase. This complex functions in the transfer of electrons from NADH to the respiratory chain, and ubiquinone is believed to be the immediate electron acceptor for the enzyme. Mutations in this gene cause Leigh syndrome due to mitochondrial complex I deficiency, a severe neurological disorder that results in bilaterally symmetrical necrotic lesions in subcortical brain regions. [provided by RefSeq, Jul 2008],



Immunohistochemistry analysis of paraffin-embedded human lung carcinoma tissue, using NDUFS7 Antibody. The picture on the right is blocked with the synthesized peptide.