

Jun B rabbit pAb**Cat#: orb768859 (Manual)**

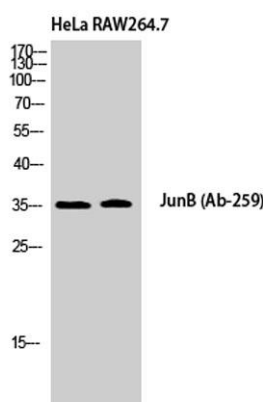
For research use only. Not intended for diagnostic use.

| | |
|---------------------------------|---|
| Product Name | Jun B rabbit pAb |
| Host species | Rabbit |
| Applications | WB;IHC;IF;IP;ELISA |
| Species Cross-Reactivity | Human;Mouse |
| Recommended dilutions | Western Blot: 1/500 - 1/2000. Immunohistochemistry: 1/100 - 1/300. Immunoprecipitation: 2-5 ug/mg lysate. ELISA: 1/20000. Not yet tested in other applications. |
| Immunogen | The antiserum was produced against synthesized peptide derived from human JunB. AA range:226-275 |
| Specificity | Jun B Polyclonal Antibody detects endogenous levels of Jun B protein. |
| Formulation | Liquid in PBS containing 50% glycerol, 0.5% BSA and 0.02% sodium azide.. |
| Storage | Store at -20°C. Avoid repeated freeze-thaw cycles. |
| Protein Name | Transcription factor jun-B |
| Gene Name | JUNB |
| Cellular localization | Nucleus. |
| Purification | The antibody was affinity-purified from rabbit antiserum by affinity-chromatography using epitope-specific immunogen. |
| Clonality | Polyclonal |

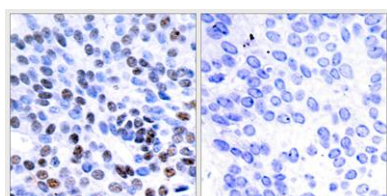
| | |
|--------------------------------|----------------------------------|
| Concentration | 1 mg/ml |
| Observed band | 36kD |
| Human Gene ID | 3726 |
| Human Swiss-Prot Number | P17275 |
| Alternative Names | JUNB; Transcription factor jun-B |

Background

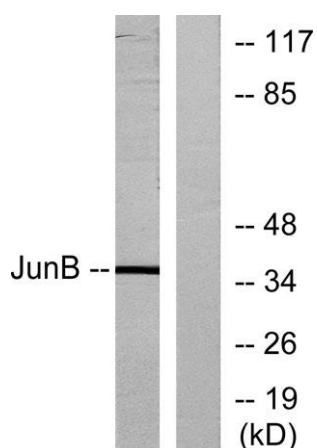
function:Transcription factor involved in regulating gene activity following the primary growth factor response. Binds to the DNA sequence 5'-TGA[CG]TCA-3'.,induction:By growth factors.,similarity:Belongs to the bZIP family.,similarity:Belongs to the bZIP family. Jun subfamily.,similarity:Contains 1 bZIP domain.,subunit:Binds DNA as an homodimer or as an heterodimer with another member of the jun/fos family.,



Western Blot analysis of HeLa RAW264.7 cells using Jun B Polyclonal Antibody cells nucleus extracted by Minute TM Cytoplasmic and Nuclear Fractionation kit (SC-003, Inventibiotec, MN, USA).



Immunohistochemistry analysis of paraffin-embedded human breast carcinoma tissue, using JunB Antibody. The picture on the right is blocked with the synthesized peptide.



Western blot analysis of lysates from HeLa cells, using JunB Antibody. The lane on the right is blocked with the synthesized peptide.