

JAK3 rabbit pAb

Cat#: orb768851 (Manual)

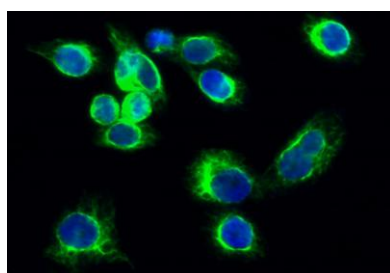
For research use only. Not intended for diagnostic use.

Product Name	JAK3 rabbit pAb
Host species	Rabbit
Applications	WB;IHC;IF;ELISA
Species Cross-Reactivity	Human;Mouse;Rat
Recommended dilutions	Western Blot: 1/500 - 1/2000. Immunohistochemistry: 1/100 - 1/300. Immunofluorescence: 1/200 - 1/1000. ELISA: 1/20000. Not yet tested in other applications.
Immunogen	The antiserum was produced against synthesized peptide derived from human JAK3. AA range:751-800
Specificity	JAK3 Polyclonal Antibody detects endogenous levels of JAK3 protein.
Formulation	Liquid in PBS containing 50% glycerol, 0.5% BSA and 0.02% sodium azide..
Storage	Store at -20°C. Avoid repeated freeze-thaw cycles.
Protein Name	Tyrosine-protein kinase JAK3
Gene Name	JAK3
Cellular localization	Endomembrane system ; Peripheral membrane protein . Cytoplasm .
Purification	The antibody was affinity-purified from rabbit antiserum by affinity-chromatography using epitope-specific immunogen.
Clonality	Polyclonal

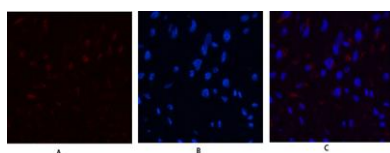
Concentration	1 mg/ml
Observed band	125kD
Human Gene ID	3718
Human Swiss-Prot Number	P52333
Alternative Names	JAK3; Tyrosine-protein kinase JAK3; Janus kinase 3; JAK-3; Leukocyte janus kinase; L-JAK

Background

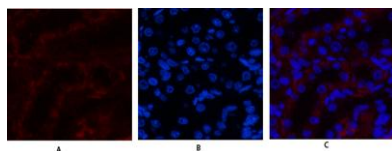
The protein encoded by this gene is a member of the Janus kinase (JAK) family of tyrosine kinases involved in cytokine receptor-mediated intracellular signal transduction. It is predominantly expressed in immune cells and transduces a signal in response to its activation via tyrosine phosphorylation by interleukin receptors. Mutations in this gene are associated with autosomal SCID (severe combined immunodeficiency disease). [provided by RefSeq, Jul 2008],



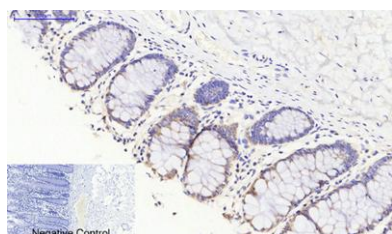
Immunofluorescence analysis of HeLa cell. 1, JAK3 Polyclonal Antibody (green) was diluted at 1:200 (4° overnight). 2, Goat Anti Rabbit Alexa Fluor 488 Catalog: RS3211 was diluted at 1:1000 (room temperature, 50min). 3 DAPI (blue) 10min.



Immunofluorescence analysis of human-uterus tissue. 1, JAK3 Polyclonal Antibody (red) was diluted at 1:200 (4° overnight). 2, Cy3 labeled Secondary antibody was diluted at 1:300 (room temperature, 50min). 3, Picture B: DAPI (blue) 10min. Picture A: Target. Picture B: DAPI. Picture C: merge of A+B



Immunofluorescence analysis of rat-kidney tissue. 1, JAK3 Polyclonal Antibody (red) was diluted at 1:200 (4°C overnight). 2, Cy3 labeled Secondary antibody was diluted at 1:300 (room temperature, 50 min). 3, Picture B: DAPI (blue) 10 min. Picture A: Target. Picture B: DAPI. Picture C: merge of A+B



Immunohistochemical analysis of paraffin-embedded Human-colon tissue. 1, JAK3 Polyclonal Antibody was diluted at 1:200 (4°C overnight). 2, Sodium citrate pH 6.0 was used for antibody retrieval (>98°C, 20 min). 3, Secondary antibody was diluted at 1:200 (room temperature, 30 min). Negative control was used by secondary antibody only.