

**JAK2 (phospho Tyr931) rabbit pAb****Cat#: orb768846 (Manual)**

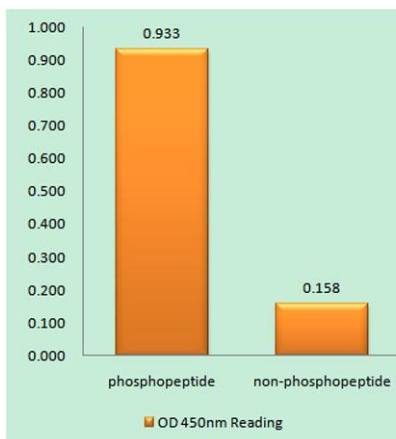
For research use only. Not intended for diagnostic use.

<b>Product Name</b>	JAK2 (phospho Tyr931) rabbit pAb
<b>Host species</b>	Rabbit
<b>Applications</b>	WB;IHC;IF;ELISA
<b>Species Cross-Reactivity</b>	Human;Mouse;Rat
<b>Recommended dilutions</b>	Western Blot: 1/500 - 1/2000. Immunohistochemistry: 1/100 - 1/300. ELISA: 1/20000. Not yet tested in other applications.
<b>Immunogen</b>	The antiserum was produced against synthesized peptide derived from human JAK2 around the phosphorylation site of Tyr931. AA range:906-955
<b>Specificity</b>	Phospho-JAK2 (Y931) Polyclonal Antibody detects endogenous levels of JAK2 protein only when phosphorylated at Y931.
<b>Formulation</b>	Liquid in PBS containing 50% glycerol, 0.5% BSA and 0.02% sodium azide..
<b>Storage</b>	Store at -20°C. Avoid repeated freeze-thaw cycles.
<b>Protein Name</b>	Tyrosine-protein kinase JAK2
<b>Gene Name</b>	JAK2
<b>Cellular localization</b>	Endomembrane system ; Peripheral membrane protein . Cytoplasm . Nucleus .
<b>Purification</b>	The antibody was affinity-purified from rabbit antiserum by affinity-chromatography using epitope-specific immunogen.
<b>Clonality</b>	Polyclonal

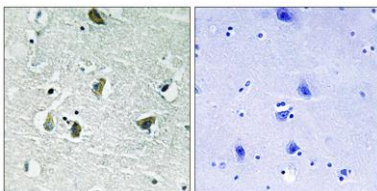
<b>Concentration</b>	1 mg/ml
<b>Observed band</b>	130kD
<b>Human Gene ID</b>	3717
<b>Human Swiss-Prot Number</b>	O60674
<b>Alternative Names</b>	JAK2; Tyrosine-protein kinase JAK2; Janus kinase 2; JAK-2

## Background

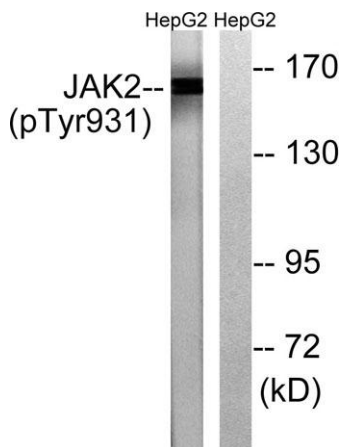
This gene product is a protein tyrosine kinase involved in a specific subset of cytokine receptor signaling pathways. It has been found to be constitutively associated with the prolactin receptor and is required for responses to gamma interferon. Mice that do not express an active protein for this gene exhibit embryonic lethality associated with the absence of definitive erythropoiesis. [provided by RefSeq, Jul 2008],



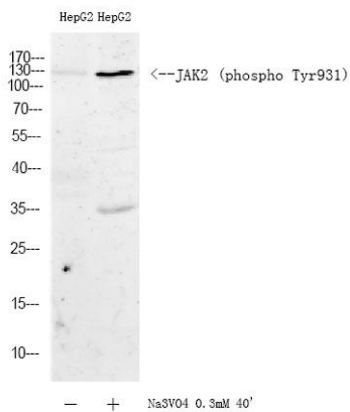
**Enzyme-Linked Immunosorbent Assay (Phospho-ELISA) for Immunogen Phosphopeptide (Phospho-left) and Non-Phosphopeptide (Phospho-right), using JAK2 (Phospho-Tyr931) Antibody**



**Immunohistochemistry analysis of paraffin-embedded human brain, using JAK2 (Phospho-Tyr931) Antibody. The picture on the right is blocked with the phosphopeptide.**



Western blot analysis of lysates from HepG2 cells treated with Na<sub>3</sub>VO<sub>4</sub> 0.3mM 40', using JAK2 (Phospho-Tyr931) Antibody. The lane on the right is blocked with the phospho peptide.



Western blot analysis of lysates from HepG2 cells treated or untreated with Na<sub>3</sub>VO<sub>4</sub> 0.3mM 40', using JAK2 (Phospho-Tyr931) Antibody.