

IRF-2 rabbit pAb

Cat#: orb768795 (Manual)

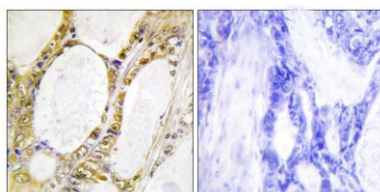
For research use only. Not intended for diagnostic use.

Product Name	IRF-2 rabbit pAb
Host species	Rabbit
Applications	WB;IHC;IF;ELISA
Species Cross-Reactivity	Human;Mouse;Rat
Recommended dilutions	Western Blot: 1/500 - 1/2000. Immunohistochemistry: 1/100 - 1/300. ELISA: 1/20000. Not yet tested in other applications.
Immunogen	The antiserum was produced against synthesized peptide derived from human IRF2. AA range:101-150
Specificity	IRF-2 Polyclonal Antibody detects endogenous levels of IRF-2 protein.
Formulation	Liquid in PBS containing 50% glycerol, 0.5% BSA and 0.02% sodium azide..
Storage	Store at -20°C. Avoid repeated freeze-thaw cycles.
Protein Name	Interferon regulatory factor 2
Gene Name	IRF2
Cellular localization	Nucleus.
Purification	The antibody was affinity-purified from rabbit antiserum by affinity-chromatography using epitope-specific immunogen.
Clonality	Polyclonal

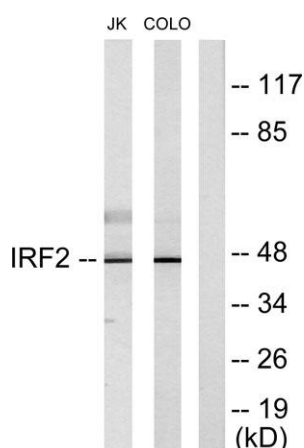
Concentration	1 mg/ml
Observed band	47kD
Human Gene ID	3660
Human Swiss-Prot Number	P14316
Alternative Names	IRF2; Interferon regulatory factor 2; IRF-2

Background

IRF2 encodes interferon regulatory factor 2, a member of the interferon regulatory transcription factor (IRF) family. IRF2 competitively inhibits the IRF1-mediated transcriptional activation of interferons alpha and beta, and presumably other genes that employ IRF1 for transcription activation. However, IRF2 also functions as a transcriptional activator of histone H4. [provided by RefSeq, Jul 2008],



Immunohistochemistry analysis of paraffin-embedded human colon carcinoma tissue, using IRF2 Antibody. The picture on the right is blocked with the synthesized peptide.



Western blot analysis of lysates from Jurkat and COLO205 cells, using IRF2 Antibody. The lane on the right is blocked with the synthesized peptide.