

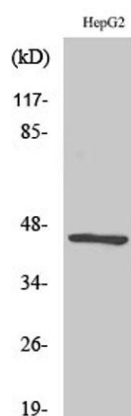
IP-10 rabbit pAb

Cat#: orb768779 (Manual)

For research use only. Not intended for diagnostic use.

Product Name	IP-10 rabbit pAb
Host species	Rabbit
Applications	IHC;IF;ELISA
Species Cross-Reactivity	Human;Pig;chicken
Recommended dilutions	Immunohistochemistry: 1/100 - 1/300. ELISA: 1/40000. Not yet tested in other applications.
Immunogen	Synthesized peptide derived from IP-10 . at AA range: 20-100
Specificity	IP-10 Polyclonal Antibody detects endogenous levels of IP-10 protein.
Formulation	Liquid in PBS containing 50% glycerol, 0.5% BSA and 0.02% sodium azide..
Storage	Store at -20°C. Avoid repeated freeze-thaw cycles.
Protein Name	C-X-C motif chemokine 10
Gene Name	CXCL10
Cellular localization	Secreted .
Purification	The antibody was affinity-purified from rabbit antiserum by affinity-chromatography using epitope-specific immunogen.
Clonality	Polyclonal

Concentration	1 mg/ml
Observed band	
Human Gene ID	3627
Human Swiss-Prot Number	P02778
Alternative Names	CXCL10; INP10; SCYB10; C-X-C motif chemokine 10; 10 kDa interferon gamma-induced protein; Gamma-IP10; IP-10; Small-inducible cytokine B10
Background	C-X-C motif chemokine ligand 10(CXCL10) Homo sapiens This antimicrobial gene encodes a chemokine of the CXC subfamily and ligand for the receptor CXCR3. Binding of this protein to CXCR3 results in pleiotropic effects, including stimulation of monocytes, natural killer and T-cell migration, and modulation of adhesion molecule expression. [provided by RefSeq, Sep 2014],



Immunohistochemical analysis of paraffin-embedded chicken tissue, the picture was kindly provided by our customer.