

ALS rabbit pAb**Cat#: orb768730 (Manual)**

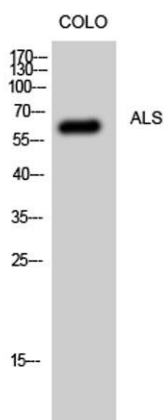
For research use only. Not intended for diagnostic use.

Product Name	ALS rabbit pAb
Host species	Rabbit
Applications	WB;ELISA
Species Cross-Reactivity	Human;Rat;Mouse;
Recommended dilutions	Western Blot: 1/500 - 1/2000. ELISA: 1/10000. Not yet tested in other applications.
Immunogen	The antiserum was produced against synthesized peptide derived from human IGFALS. AA range:303-352
Specificity	ALS Polyclonal Antibody detects endogenous levels of ALS protein.
Formulation	Liquid in PBS containing 50% glycerol, 0.5% BSA and 0.02% sodium azide..
Storage	Store at -20°C. Avoid repeated freeze-thaw cycles.
Protein Name	Insulin-like growth factor-binding protein complex acid labile subunit
Gene Name	IGFALS
Cellular localization	Secreted, extracellular space.
Purification	The antibody was affinity-purified from rabbit antiserum by affinity-chromatography using epitope-specific immunogen.
Clonality	Polyclonal

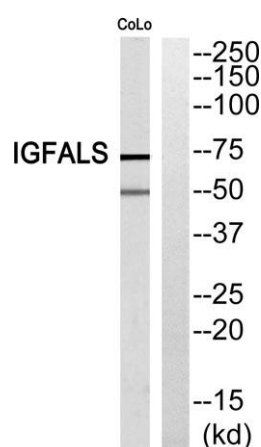
Concentration	1 mg/ml
Observed band	66kD
Human Gene ID	3483
Human Swiss-Prot Number	P35858
Alternative Names	IGFALS; ALS; Insulin-like growth factor-binding protein complex acid labile subunit; ALS

Background

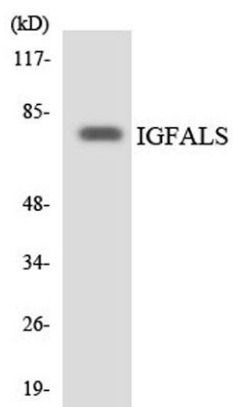
The protein encoded by this gene is a serum protein that binds insulin-like growth factors, increasing their half-life and their vascular localization. Production of the encoded protein, which contains twenty leucine-rich repeats, is stimulated by growth hormone. Defects in this gene are a cause of acid-labile subunit deficiency, which manifests itself in a delayed and slow puberty. Three transcript variants encoding two different isoforms have been found for this gene. [provided by RefSeq, Mar 2009],



Western Blot analysis of CoLo cells using ALS Polyclonal Antibody



Western blot analysis of IGFALS Antibody. The lane on the right is blocked with the IGFALS peptide.



Western blot analysis of the lysates from RAW264.7 cells using IGFALS antibody.