

Rab 41 rabbit pAb**Cat#: orb768719 (Manual)**

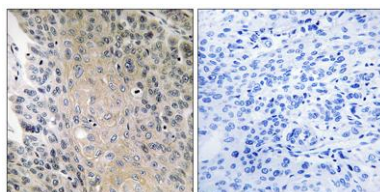
For research use only. Not intended for diagnostic use.

Product Name	Rab 41 rabbit pAb
Host species	Rabbit
Applications	IHC;IF;ELISA
Species Cross-Reactivity	Human;Rat;Mouse;
Recommended dilutions	Immunohistochemistry: 1/100 - 1/300. ELISA: 1/20000. Not yet tested in other applications.
Immunogen	The antiserum was produced against synthesized peptide derived from human RAB41. AA range:115-164
Specificity	Rab 41 Polyclonal Antibody detects endogenous levels of Rab 41 protein.
Formulation	Liquid in PBS containing 50% glycerol, 0.5% BSA and 0.02% sodium azide..
Storage	Store at -20°C. Avoid repeated freeze-thaw cycles.
Protein Name	Ras-related protein Rab-41
Gene Name	RAB41
Cellular localization	Cytoplasm . punctate localization concentrated in ruffled regions at the cell periphery.
Purification	The antibody was affinity-purified from rabbit antiserum by affinity-chromatography using epitope-specific immunogen.
Clonality	Polyclonal

Concentration	1 mg/ml
Observed band	
Human Gene ID	347517
Human Swiss-Prot Number	Q5JT25
Alternative Names	RAB41; Ras-related protein Rab-41

Background

This gene encodes a small GTP-binding protein that belongs to the largest family within the Ras superfamily. These proteins function as regulators of membrane trafficking. They cycle between inactive GDP-bound and activated GTP-bound states, which is controlled by GTP hydrolysis-activating proteins (GAPs). This family member can be activated by the GAP protein RN-Tre, and it is localized to the Golgi complex. [provided by RefSeq, May 2010],



Immunohistochemistry analysis of paraffin-embedded human lung carcinoma, using RAB41 Antibody. The picture on the right is blocked with the synthesized peptide.