

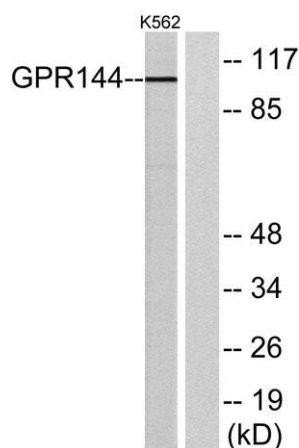
GPR144 rabbit pAb**Cat#: orb768717 (Manual)**

For research use only. Not intended for diagnostic use.

Product Name	GPR144 rabbit pAb
Host species	Rabbit
Applications	WB;IF;ELISA
Species Cross-Reactivity	Human;Rat;Mouse;
Recommended dilutions	Western Blot: 1/500 - 1/2000. Immunofluorescence: 1/200 - 1/1000. ELISA: 1/5000. Not yet tested in other applications.
Immunogen	The antiserum was produced against synthesized peptide derived from human GPR144. AA range:91-140
Specificity	GPR144 Polyclonal Antibody detects endogenous levels of GPR144 protein.
Formulation	Liquid in PBS containing 50% glycerol, 0.5% BSA and 0.02% sodium azide..
Storage	Store at -20°C. Avoid repeated freeze-thaw cycles.
Protein Name	Probable G-protein coupled receptor 144
Gene Name	GPR144
Cellular localization	Membrane ; Multi-pass membrane protein .
Purification	The antibody was affinity-purified from rabbit antiserum by affinity-chromatography using epitope-specific immunogen.
Clonality	Polyclonal

Concentration	1 mg/ml
Observed band	104kD
Human Gene ID	347088
Human Swiss-Prot Number	Q7Z7M1
Alternative Names	GPR144; PGR24; Probable G-protein coupled receptor 144; G-protein coupled receptor PGR24

Background function:Orphan receptor.,similarity:Belongs to the G-protein coupled receptor 2 family. LN-TM7 subfamily.,similarity:Contains 1 GPS domain.,similarity:Contains 1 pentaxin domain.,



Western blot analysis of lysates from K562 cells, using GPR144 Antibody. The lane on the right is blocked with the synthesized peptide.