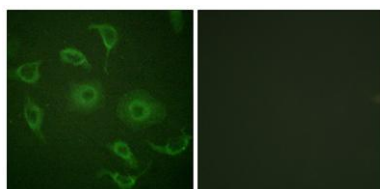


**IFN- $\alpha$ / $\beta$ R $\alpha$  rabbit pAb****Cat#: orb768712 (Manual)**

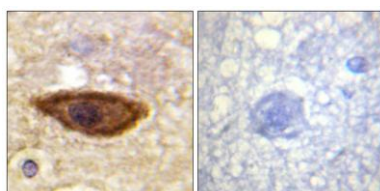
For research use only. Not intended for diagnostic use.

<b>Product Name</b>	IFN- $\alpha$ / $\beta$ R $\alpha$ rabbit pAb
<b>Host species</b>	Rabbit
<b>Applications</b>	IHC;IF;ELISA
<b>Species Cross-Reactivity</b>	Human;Rat;Mouse;
<b>Recommended dilutions</b>	WB 1:500-2000 ,Immunohistochemistry: 1/100 - 1/300. Immunofluorescence: 1/200 - 1/1000. ELISA: 1/20000. Not yet tested in other applications.
<b>Immunogen</b>	The antiserum was produced against synthesized peptide derived from human Interferon-alpha/beta Receptor alpha chain. AA range:436-485
<b>Specificity</b>	IFN- $\alpha$ / $\beta$ R $\alpha$ Polyclonal Antibody detects endogenous levels of IFN- $\alpha$ / $\beta$ R $\alpha$ protein.
<b>Formulation</b>	Liquid in PBS containing 50% glycerol, 0.5% BSA and 0.02% sodium azide..
<b>Storage</b>	Store at -20°C. Avoid repeated freeze-thaw cycles.
<b>Protein Name</b>	Interferon alpha/beta receptor 1
<b>Gene Name</b>	IFNAR1
<b>Cellular localization</b>	[Isoform 1]: Cell membrane ; Single-pass type I membrane protein . Late endosome . Lysosome . Interferon binding triggers internalization of the receptor from the cell membrane into endosomes and then into lysosomes. .
<b>Purification</b>	The antibody was affinity-purified from rabbit antiserum by affinity-chromatography using epitope-specific immunogen.

<b>Clonality</b>	Polyclonal
<b>Concentration</b>	1 mg/ml
<b>Observed band</b>	
<b>Human Gene ID</b>	3454
<b>Human Swiss-Prot Number</b>	P17181
<b>Alternative Names</b>	IFNAR1; IFNAR; Interferon alpha/beta receptor 1; IFN-R-1; IFN-alpha/beta receptor 1; Cytokine receptor class-II member 1; Cytokine receptor family 2 member 1; CRF2-1; Type I interferon receptor 1
<b>Background</b>	The protein encoded by this gene is a type I membrane protein that forms one of the two chains of a receptor for interferons alpha and beta. Binding and activation of the receptor stimulates Janus protein kinases, which in turn phosphorylate several proteins, including STAT1 and STAT2. The encoded protein also functions as an antiviral factor. [provided by RefSeq, Jul 2008],



**Immunofluorescence analysis of HepG2 cells, using Interferon-alpha/beta Receptor alpha chain Antibody. The picture on the right is blocked with the synthesized peptide.**



**Immunohistochemistry analysis of paraffin-embedded human brain tissue, using Interferon-alpha/beta Receptor alpha chain Antibody. The picture on the right is blocked with the synthesized peptide.**



Explore. Bioreagents.

[www.biorbyt.com](http://www.biorbyt.com)