

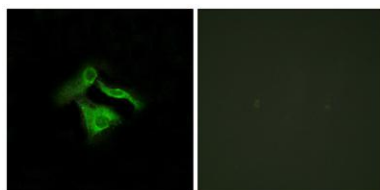
GPR149 rabbit pAb

Cat#: orb768709 (Manual)

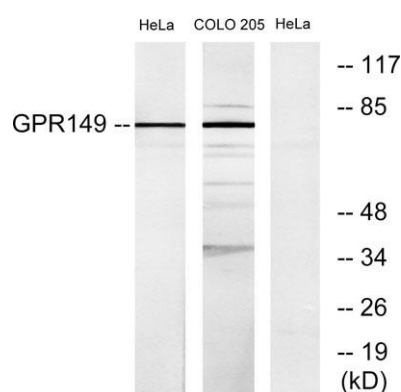
For research use only. Not intended for diagnostic use.

Product Name	GPR149 rabbit pAb
Host species	Rabbit
Applications	WB;IHC;IF;ELISA
Species Cross-Reactivity	Human;Rat;Mouse;
Recommended dilutions	Western Blot: 1/500 - 1/2000. Immunohistochemistry: 1/100 - 1/300. Immunofluorescence: 1/200 - 1/1000. ELISA: 1/5000. Not yet tested in other applications.
Immunogen	The antiserum was produced against synthesized peptide derived from human GPR149. AA range:451-500
Specificity	GPR149 Polyclonal Antibody detects endogenous levels of GPR149 protein.
Formulation	Liquid in PBS containing 50% glycerol, 0.5% BSA and 0.02% sodium azide..
Storage	Store at -20°C. Avoid repeated freeze-thaw cycles.
Protein Name	Probable G-protein coupled receptor 149
Gene Name	GPR149
Cellular localization	Cell membrane; Multi-pass membrane protein.
Purification	The antibody was affinity-purified from rabbit antiserum by affinity-chromatography using epitope-specific immunogen.
Clonality	Polyclonal

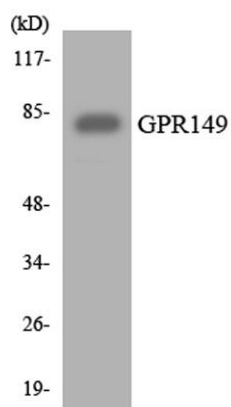
Concentration	1 mg/ml
Observed band	81kD
Human Gene ID	344758
Human Swiss-Prot Number	Q86SP6
Alternative Names	GPR149; PGR10; Probable G-protein coupled receptor 149; G-protein coupled receptor PGR10
Background	function:Orphan receptor.,similarity:Belongs to the G-protein coupled receptor 1 family.,



Immunofluorescence analysis of HeLa cells, using GPR149 Antibody. The picture on the right is blocked with the synthesized peptide.



Western blot analysis of lysates from HeLa and COLO205 cells, using GPR149 Antibody. The lane on the right is blocked with the synthesized peptide.



Western blot analysis of the lysates from 293 cells using GPR149 antibody.