

Olfactory receptor 2W3 rabbit pAb

Cat#: orb768705 (Manual)

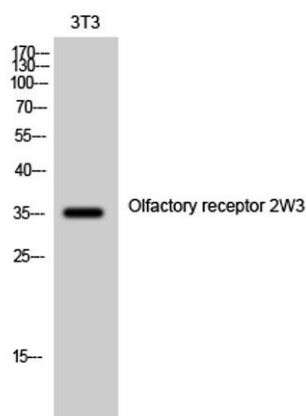
For research use only. Not intended for diagnostic use.

Product Name	Olfactory receptor 2W3 rabbit pAb
Host species	Rabbit
Applications	WB;ELISA
Species Cross-Reactivity	Human;Rat;Mouse;
Recommended dilutions	Western Blot: 1/500 - 1/2000. ELISA: 1/10000. Not yet tested in other applications.
Immunogen	The antiserum was produced against synthesized peptide derived from human OR2W3. AA range:141-190
Specificity	Olfactory receptor 2W3 Polyclonal Antibody detects endogenous levels of Olfactory receptor 2W3 protein.
Formulation	Liquid in PBS containing 50% glycerol, 0.5% BSA and 0.02% sodium azide..
Storage	Store at -20°C. Avoid repeated freeze-thaw cycles.
Protein Name	Olfactory receptor 2W3
Gene Name	OR2W3
Cellular localization	Cell membrane; Multi-pass membrane protein.
Purification	The antibody was affinity-purified from rabbit antiserum by affinity-chromatography using epitope-specific immunogen.
Clonality	Polyclonal

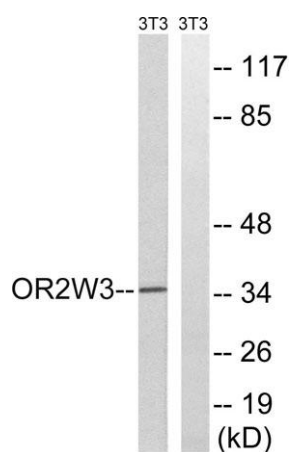
Concentration	1 mg/ml
Observed band	35kD
Human Gene ID	343171
Human Swiss-Prot Number	Q7Z3T1
Alternative Names	OR2W3; OR2W3P; OR2W8P; Olfactory receptor 2W3; Olfactory receptor 2W8; Olfactory receptor OR1-49

Background

olfactory receptor family 2 subfamily W member 3(OR2W3) Homo sapiens Olfactory receptors interact with odorant molecules in the nose, to initiate a neuronal response that triggers the perception of a smell. The olfactory receptor proteins are members of a large family of G-protein-coupled receptors (GPCR) arising from single coding-exon genes. Olfactory receptors share a 7-transmembrane domain structure with many neurotransmitter and hormone receptors and are responsible for the recognition and G protein-mediated transduction of odorant signals. The olfactory receptor gene family is the largest in the genome. The nomenclature assigned to the olfactory receptor genes and proteins for this organism is independent of other organisms. [provided by RefSeq, Jul 2008],



Western Blot analysis of 3T3 cells using Olfactory receptor 2W3 Polyclonal Antibody



Western blot analysis of lysates from NIH/3T3 cells, using OR2W3 Antibody. The lane on the right is blocked with the synthesized peptide.