

hnRNP CL1 rabbit pAb**Cat#: orb768704 (Manual)**

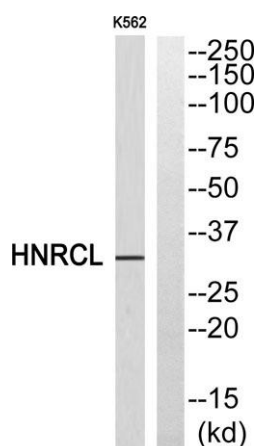
For research use only. Not intended for diagnostic use.

Product Name	hnRNP CL1 rabbit pAb
Host species	Rabbit
Applications	WB;ELISA
Species Cross-Reactivity	Human;Rat;Mouse;
Recommended dilutions	Western Blot: 1/500 - 1/2000. ELISA: 1/20000. Not yet tested in other applications.
Immunogen	The antiserum was produced against synthesized peptide derived from human HNRCL. AA range:31-80
Specificity	hnRNP CL1 Polyclonal Antibody detects endogenous levels of hnRNP CL1 protein.
Formulation	Liquid in PBS containing 50% glycerol, 0.5% BSA and 0.02% sodium azide..
Storage	Store at -20°C. Avoid repeated freeze-thaw cycles.
Protein Name	Heterogeneous nuclear ribonucleoprotein C-like 1
Gene Name	HNRNPCL1
Cellular localization	Nucleus . Component of ribonucleosomes. .
Purification	The antibody was affinity-purified from rabbit antiserum by affinity-chromatography using epitope-specific immunogen.
Clonality	Polyclonal

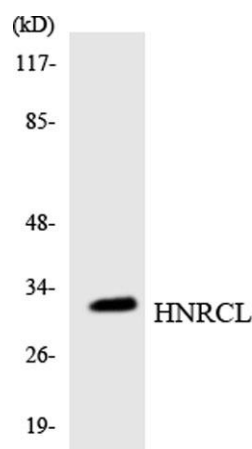
Concentration	1 mg/ml
Observed band	32kD
Human Gene ID	343069
Human Swiss-Prot Number	O60812
Alternative Names	HNRNPCL1; HNRPCL1; Heterogeneous nuclear ribonucleoprotein C-like 1; hnRNP C-like-1; hnRNP core protein C-like 1

Background

function: May play a role in nucleosome assembly by neutralizing basic proteins such as A and B core hnRNPs., similarity: Belongs to the RRM HNRPC family, RALY subfamily., similarity: Contains 1 RRM (RNA recognition motif) domain., subcellular location: Component of ribonucleosomes.,



Western blot analysis of HNRCL Antibody. The lane on the right is blocked with the HNRCL peptide.



Western blot analysis of the lysates from RAW264.7 cells using HNRCL antibody.