

ZSCAN22 rabbit pAb**Cat#: orb768703 (Manual)**

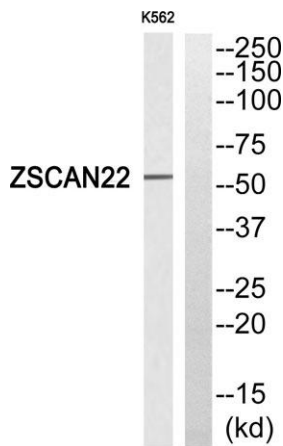
For research use only. Not intended for diagnostic use.

Product Name	ZSCAN22 rabbit pAb
Host species	Rabbit
Applications	WB;IHC;IF;ELISA
Species Cross-Reactivity	Human;Rat;Mouse;
Recommended dilutions	Western Blot: 1/500 - 1/2000. Immunohistochemistry: 1/100 - 1/300. ELISA: 1/10000. Not yet tested in other applications.
Immunogen	The antiserum was produced against synthesized peptide derived from human ZSCAN22. AA range:321-370
Specificity	ZSCAN22 Polyclonal Antibody detects endogenous levels of ZSCAN22 protein.
Formulation	Liquid in PBS containing 50% glycerol, 0.5% BSA and 0.02% sodium azide..
Storage	Store at -20°C. Avoid repeated freeze-thaw cycles.
Protein Name	Zinc finger and SCAN domain-containing protein 22
Gene Name	ZSCAN22
Cellular localization	Nucleus .
Purification	The antibody was affinity-purified from rabbit antiserum by affinity-chromatography using epitope-specific immunogen.
Clonality	Polyclonal

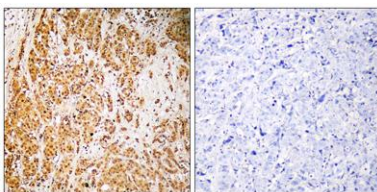
Concentration	1 mg/ml
Observed band	55kD
Human Gene ID	342945
Human Swiss-Prot Number	P10073
Alternative Names	ZSCAN22; HKR2; ZNF50; Zinc finger and SCAN domain-containing protein 22; Krueppel-related zinc finger protein 2; Protein HKR2; Zinc finger protein 50

Background

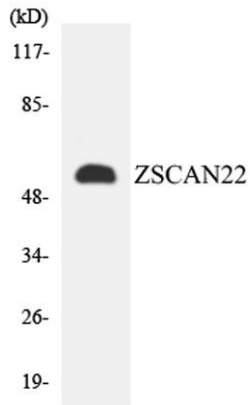
function:May be involved in transcriptional regulation.,PTM:Phosphorylated upon DNA damage, probably by ATM or ATR.,similarity:Belongs to the krueppel C2H2-type zinc-finger protein family.,similarity:Contains 1 SCAN box domain.,similarity:Contains 8 C2H2-type zinc fingers.,



Western blot analysis of ZSCAN22 Antibody. The lane on the right is blocked with the ZSCAN22 peptide.



Immunohistochemistry analysis of paraffin-embedded human brain, using ZSCAN22 Antibody. The lane on the right is blocked with the ZSCAN22 peptide.



Western blot analysis of the lysates from HepG2 cells using ZSCAN22 antibody.