

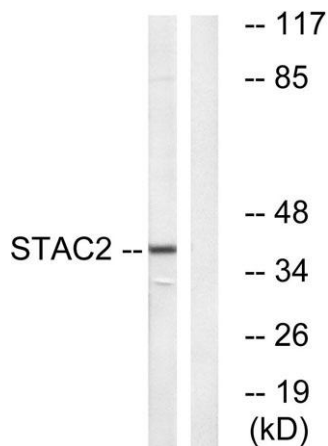
STAC2 rabbit pAb**Cat#: orb768701 (Manual)**

For research use only. Not intended for diagnostic use.

Product Name	STAC2 rabbit pAb
Host species	Rabbit
Applications	WB;ELISA
Species Cross-Reactivity	Human;Mouse;Rat
Recommended dilutions	Western Blot: 1/500 - 1/2000. ELISA: 1/20000. Not yet tested in other applications.
Immunogen	The antiserum was produced against synthesized peptide derived from human STAC2. AA range:211-260
Specificity	STAC2 Polyclonal Antibody detects endogenous levels of STAC2 protein.
Formulation	Liquid in PBS containing 50% glycerol, 0.5% BSA and 0.02% sodium azide..
Storage	Store at -20°C. Avoid repeated freeze-thaw cycles.
Protein Name	SH3 and cysteine-rich domain-containing protein 2
Gene Name	STAC2
Cellular localization	Cytoplasm, cytosol . Cell membrane ; Peripheral membrane protein ; Cytoplasmic side . Cell membrane, sarcolemma ; Peripheral membrane protein ; Cytoplasmic side . Colocalizes with CACNA1C at the plasma membrane of transfected cells. .
Purification	The antibody was affinity-purified from rabbit antiserum by affinity-chromatography using epitope-specific immunogen.

Clonality	Polyclonal
Concentration	1 mg/ml
Observed band	40kD
Human Gene ID	342667
Human Swiss-Prot Number	Q6ZMT1
Alternative Names	STAC2; SH3 and cysteine-rich domain-containing protein 2; 24b2/STAC2; Src homology 3 and cysteine-rich domain-containing protein 2

Background similarity:Contains 1 phorbol-ester/DAG-type zinc finger.,similarity:Contains 1 SH3 domain.,



Western blot analysis of lysates from K562 cells, using STAC2 Antibody. The lane on the right is blocked with the synthesized peptide.