

Synaptotagmin X rabbit pAb

Cat#: orb768697 (Manual)

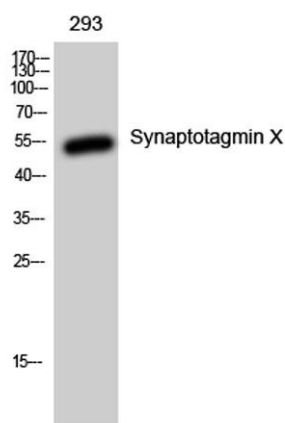
For research use only. Not intended for diagnostic use.

Product Name	Synaptotagmin X rabbit pAb
Host species	Rabbit
Applications	WB;IHC
Species Cross-Reactivity	Human;Mouse;Rat
Recommended dilutions	WB 1:500-2000;IHC-p 1:50-300
Immunogen	Synthesized peptide derived from Synaptotagmin X . at AA range: 380-460
Specificity	Synaptotagmin X Polyclonal Antibody detects endogenous levels of Synaptotagmin X protein.
Formulation	Liquid in PBS containing 50% glycerol, 0.5% BSA and 0.02% sodium azide..
Storage	Store at -20°C. Avoid repeated freeze-thaw cycles.
Protein Name	Synaptotagmin-10
Gene Name	SYT10
Cellular localization	Cytoplasmic vesicle, secretory vesicle membrane ; Single-pass membrane protein . Localizes to neuronal vesicles containing IGF1 that are not enriched at synapses. Does not colocalize with synaptic vesicles or with the Golgi apparatus. .
Purification	The antibody was affinity-purified from rabbit antiserum by affinity-chromatography using epitope-specific immunogen.

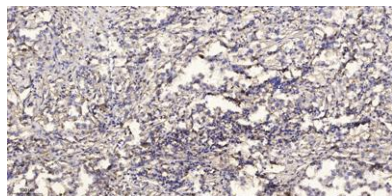
Clonality	Polyclonal
Concentration	1 mg/ml
Observed band	55kD
Human Gene ID	341359
Human Swiss-Prot Number	Q6XYQ8
Alternative Names	SYT10; Synaptotagmin-10; Synaptotagmin X; SytX

Background

cofactor: Binds 3 calcium ions per subunit. The ions are bound to the C2 domains.,function: May be involved in Ca^{2+} -dependent exocytosis of secretory vesicles through Ca^{2+} and phospholipid binding to the C2 domain or may serve as Ca^{2+} sensors in the process of vesicular trafficking and exocytosis.,similarity: Belongs to the synaptotagmin family.,similarity: Contains 2 C2 domains.,subunit: Homodimer. Can also form heterodimers.,tissue specificity: Expressed only in pancreas, lung and kidney.,



Western Blot analysis of 293 cells using Synaptotagmin X Polyclonal Antibody



Immunohistochemical analysis of paraffin-embedded human Squamous cell carcinoma of lung. 1, Antibody was diluted at 1:200(4° overnight). 2, Tris-EDTA,pH9.0 was used for antigen retrieval. 3,Secondary antibody was diluted at 1:200(room temperature, 45min).