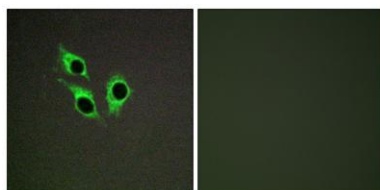


Anoctamin-9 rabbit pAb**Cat#: orb768684 (Manual)**

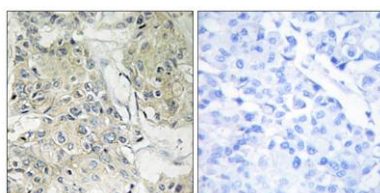
For research use only. Not intended for diagnostic use.

Product Name	Anoctamin-9 rabbit pAb
Host species	Rabbit
Applications	IHC;IF;ELISA
Species Cross-Reactivity	Human;Rat;Mouse;
Recommended dilutions	Immunohistochemistry: 1/100 - 1/300. Immunofluorescence: 1/200 - 1/1000. ELISA: 1/5000. Not yet tested in other applications.
Immunogen	The antiserum was produced against synthesized peptide derived from human TM16J. AA range:481-530
Specificity	Anoctamin-9 Polyclonal Antibody detects endogenous levels of Anoctamin-9 protein.
Formulation	Liquid in PBS containing 50% glycerol, 0.5% BSA and 0.02% sodium azide..
Storage	Store at -20°C. Avoid repeated freeze-thaw cycles.
Protein Name	Anoctamin-9
Gene Name	ANO9
Cellular localization	Cell membrane ; Multi-pass membrane protein . Shows predominantly an intracellular localization with a weak expression in the cell membrane.
Purification	The antibody was affinity-purified from rabbit antiserum by affinity-chromatography using epitope-specific immunogen.
Clonality	Polyclonal

Concentration	1 mg/ml
Observed band	
Human Gene ID	338440
Human Swiss-Prot Number	A1A5B4
Alternative Names	ANO9; PIG5; TMEM16J; TP53I5; Anoctamin-9; Transmembrane protein 16J; Tumor protein p53-inducible protein 5; p53-induced gene 5 protein
Background	function:May act as a calcium-activated chloride channel.,sequence caution:Intron retention.,similarity:Belongs to the anoctamin family.,



Immunofluorescence analysis of HepG2 cells, using TM16J Antibody. The picture on the right is blocked with the synthesized peptide.



Immunohistochemistry analysis of paraffin-embedded human breast carcinoma tissue, using TM16J Antibody. The picture on the right is blocked with the synthesized peptide.