

HSP10 rabbit pAb

Cat#: orb768669 (Manual)

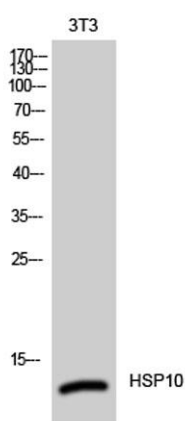
For research use only. Not intended for diagnostic use.

Product Name	HSP10 rabbit pAb
Host species	Rabbit
Applications	WB;IHC;IF;ELISA
Species Cross-Reactivity	Human;Mouse;Rat
Recommended dilutions	Western Blot: 1/500 - 1/2000. Immunohistochemistry: 1/100 - 1/300. Immunofluorescence: 1/200 - 1/1000. ELISA: 1/10000. Not yet tested in other applications.
Immunogen	The antiserum was produced against synthesized peptide derived from human HSP10. AA range:51-100
Specificity	HSP10 Polyclonal Antibody detects endogenous levels of HSP10 protein.
Formulation	Liquid in PBS containing 50% glycerol, 0.5% BSA and 0.02% sodium azide..
Storage	Store at -20°C. Avoid repeated freeze-thaw cycles.
Protein Name	10 kDa heat shock protein mitochondrial
Gene Name	HSPE1
Cellular localization	Mitochondrion matrix.
Purification	The antibody was affinity-purified from rabbit antiserum by affinity-chromatography using epitope-specific immunogen.
Clonality	Polyclonal

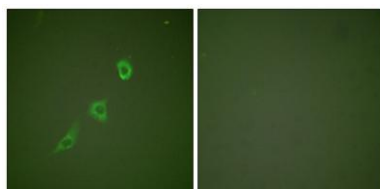
Concentration	1 mg/ml
Observed band	10kD
Human Gene ID	3336
Human Swiss-Prot Number	P61604
Alternative Names	HSPE1; 10 kDa heat shock protein; mitochondrial; Hsp10; 10 kDa chaperonin; Chaperonin 10; CPN10; Early-pregnancy factor; EPF

Background

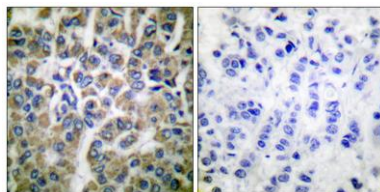
This gene encodes a major heat shock protein which functions as a chaperonin. Its structure consists of a heptameric ring which binds to another heat shock protein in order to form a symmetric, functional heterodimer which enhances protein folding in an ATP-dependent manner. This gene and its co-chaperonin, HSPD1, are arranged in a head-to-head orientation on chromosome 2. Naturally occurring read-through transcription occurs between this locus and the neighboring locus MOBKL3.[provided by RefSeq, Feb 2011],



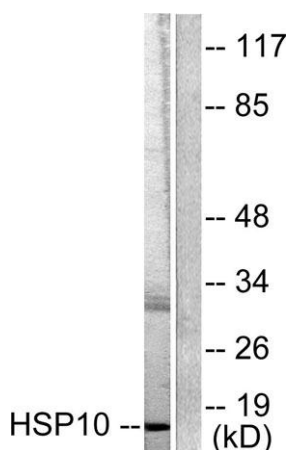
Western Blot analysis of 3T3 cells using HSP10 Polyclonal Antibody



Immunofluorescence analysis of NIH/3T3 cells, using HSP10 Antibody. The picture on the right is blocked with the synthesized peptide.



Immunohistochemistry analysis of paraffin-embedded human breast carcinoma tissue, using HSP10 Antibody. The picture on the right is blocked with the synthesized peptide.



Western blot analysis of lysates from NIH/3T3 cells, using HSP10 Antibody. The lane on the right is blocked with the synthesized peptide.