

E-Ras rabbit pAb

Cat#: orb768648 (Manual)

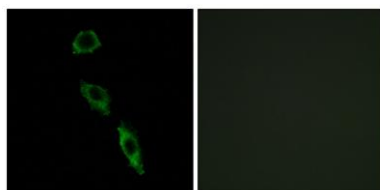
For research use only. Not intended for diagnostic use.

Product Name	E-Ras rabbit pAb
Host species	Rabbit
Applications	WB;IF;ELISA
Species Cross-Reactivity	Human;Rat;Mouse;
Recommended dilutions	Western Blot: 1/500 - 1/2000. Immunofluorescence: 1/200 - 1/1000. ELISA: 1/20000. Not yet tested in other applications.
Immunogen	The antiserum was produced against synthesized peptide derived from human ERAS. AA range:184-233
Specificity	E-Ras Polyclonal Antibody detects endogenous levels of E-Ras protein.
Formulation	Liquid in PBS containing 50% glycerol, 0.5% BSA and 0.02% sodium azide..
Storage	Store at -20°C. Avoid repeated freeze-thaw cycles.
Protein Name	GTPase Eras
Gene Name	ERAS
Cellular localization	Cell membrane ; Lipid-anchor ; Cytoplasmic side .
Purification	The antibody was affinity-purified from rabbit antiserum by affinity-chromatography using epitope-specific immunogen.
Clonality	Polyclonal

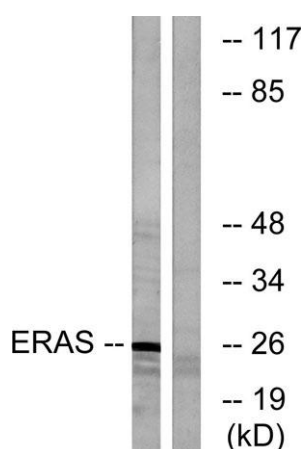
Concentration	1 mg/ml
Observed band	25kD
Human Gene ID	3266
Human Swiss-Prot Number	Q7Z444
Alternative Names	ERAS; HRAS2; HRASP; GTPase ERas; E-Ras; Embryonic stem cell-expressed Ras

Background

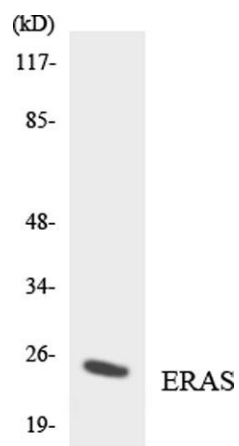
This gene encodes a constitutively active member of the small GTPase Ras protein family. The encoded protein activates the phosphatidylinositol 3-kinase signal transduction pathway in undifferentiated stem cells, but is not expressed in differentiated cells. This gene may be involved in cancer and chemotherapy resistance. [provided by RefSeq, Dec 2012],



Immunofluorescence analysis of A549 cells, using ERAS Antibody. The picture on the right is blocked with the synthesized peptide.



Western blot analysis of lysates from Jurkat cells, using ERAS Antibody. The lane on the right is blocked with the synthesized peptide.



Western blot analysis of the lysates from HeLa cells using ERAS antibody.