

## HoxD8 rabbit pAb

**Cat#: orb768641 (Manual)**

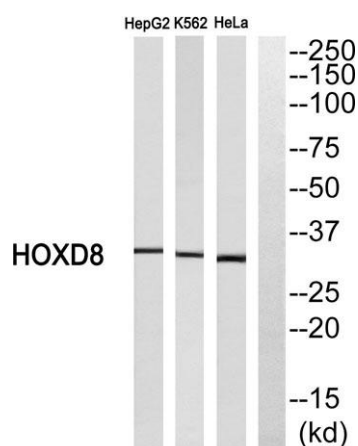
For research use only. Not intended for diagnostic use.

<b>Product Name</b>	HoxD8 rabbit pAb
<b>Host species</b>	Rabbit
<b>Applications</b>	WB;ELISA
<b>Species Cross-Reactivity</b>	Human;Rat;Mouse;
<b>Recommended dilutions</b>	Western Blot: 1/500 - 1/2000. ELISA: 1/40000. Not yet tested in other applications.
<b>Immunogen</b>	The antiserum was produced against synthesized peptide derived from human HOXD8. AA range:241-290
<b>Specificity</b>	HoxD8 Polyclonal Antibody detects endogenous levels of HoxD8 protein.
<b>Formulation</b>	Liquid in PBS containing 50% glycerol, 0.5% BSA and 0.02% sodium azide..
<b>Storage</b>	Store at -20°C. Avoid repeated freeze-thaw cycles.
<b>Protein Name</b>	Homeobox protein Hox-D8
<b>Gene Name</b>	HOXD8
<b>Cellular localization</b>	Nucleus.
<b>Purification</b>	The antibody was affinity-purified from rabbit antiserum by affinity-chromatography using epitope-specific immunogen.
<b>Clonality</b>	Polyclonal

<b>Concentration</b>	1 mg/ml
<b>Observed band</b>	32kD
<b>Human Gene ID</b>	3234
<b>Human Swiss-Prot Number</b>	P13378
<b>Alternative Names</b>	HOXD8; HOX4E; Homeobox protein Hox-D8; Homeobox protein Hox-4E; Homeobox protein Hox-5.4

### Background

This gene belongs to the homeobox family of genes. The homeobox genes encode a highly conserved family of transcription factors that play an important role in morphogenesis in all multicellular organisms. Mammals possess four similar homeobox gene clusters, HOXA, HOXB, HOXC and HOXD, located on different chromosomes, consisting of 9 to 11 genes arranged in tandem. This gene is one of several homeobox HOXD genes located in a cluster on chromosome 2. Deletions that remove the entire HOXD gene cluster or the 5' end of this cluster have been associated with severe limb and genital abnormalities. In addition to effects during embryogenesis, this particular gene may also play a role in adult urogenital tract function. Alternate splicing results in multiple transcript variants.[provided by RefSeq, Dec 2010],



**Western blot analysis of HOXD8 Antibody. The lane on the right is blocked with the HOXD8 peptide.**