

HoxB2 rabbit pAb**Cat#: orb768638 (Manual)**

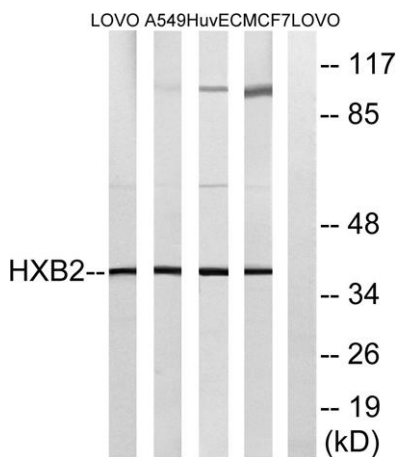
For research use only. Not intended for diagnostic use.

| | |
|---------------------------------|---|
| Product Name | HoxB2 rabbit pAb |
| Host species | Rabbit |
| Applications | WB;ELISA |
| Species Cross-Reactivity | Human;Rat;Mouse; |
| Recommended dilutions | Western Blot: 1/500 - 1/2000. ELISA: 1/20000. Not yet tested in other applications. |
| Immunogen | The antiserum was produced against synthesized peptide derived from human HOXB2. AA range:41-90 |
| Specificity | HoxB2 Polyclonal Antibody detects endogenous levels of HoxB2 protein. |
| Formulation | Liquid in PBS containing 50% glycerol, 0.5% BSA and 0.02% sodium azide.. |
| Storage | Store at -20°C. Avoid repeated freeze-thaw cycles. |
| Protein Name | Homeobox protein Hox-B2 |
| Gene Name | HOXB2 |
| Cellular localization | Nucleus. |
| Purification | The antibody was affinity-purified from rabbit antiserum by affinity-chromatography using epitope-specific immunogen. |
| Clonality | Polyclonal |

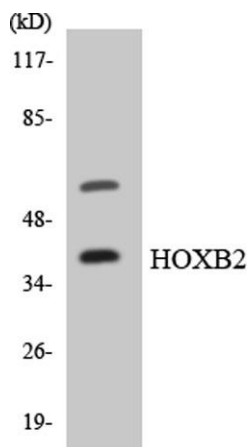
| | |
|--------------------------------|--|
| Concentration | 1 mg/ml |
| Observed band | 38kD |
| Human Gene ID | 3212 |
| Human Swiss-Prot Number | P14652 |
| Alternative Names | HOXB2; HOX2H; Homeobox protein Hox-B2; Homeobox protein Hox-2.8; Homeobox protein Hox-2H; K8 |

Background

This gene is a member of the Antp homeobox family and encodes a nuclear protein with a homeobox DNA-binding domain. It is included in a cluster of homeobox B genes located on chromosome 17. The encoded protein functions as a sequence-specific transcription factor that is involved in development. Increased expression of this gene is associated with pancreatic cancer. [provided by RefSeq, Jul 2008],



Western blot analysis of lysates from MCF-7, HUVEC, A549, and LOVO cells, using HOXB2 Antibody. The lane on the right is blocked with the synthesized peptide.



Western blot analysis of the lysates from HUVEC cells using HOXB2 antibody.