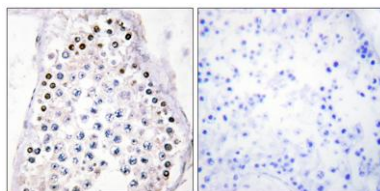


Hox-A1/B1/D1 rabbit pAb**Cat#: orb768637 (Manual)**

For research use only. Not intended for diagnostic use.

Product Name	Hox-A1/B1/D1 rabbit pAb
Host species	Rabbit
Applications	IHC;IF;ELISA
Species Cross-Reactivity	Human;Mouse
Recommended dilutions	Immunohistochemistry: 1/100 - 1/300. ELISA: 1/10000. Not yet tested in other applications.
Immunogen	The antiserum was produced against synthesized peptide derived from human HOXA1/B1/D1. AA range:216-265
Specificity	Hox-A1/B1/D1 Polyclonal Antibody detects endogenous levels of Hox-A1/B1/D1 protein.
Formulation	Liquid in PBS containing 50% glycerol, 0.5% BSA and 0.02% sodium azide..
Storage	Store at -20°C. Avoid repeated freeze-thaw cycles.
Protein Name	Homeobox protein Hox-B1
Gene Name	HOXB1
Cellular localization	Nucleus.
Purification	The antibody was affinity-purified from rabbit antiserum by affinity-chromatography using epitope-specific immunogen.
Clonality	Polyclonal

Concentration	1 mg/ml
Observed band	
Human Gene ID	3211/3198/3231
Human Swiss-Prot Number	P14653/P49639/Q9GZZ0
Alternative Names	HOXB1; HOX2I; Homeobox protein Hox-B1; Homeobox protein Hox-2I; HOXA1; HOX1F; Homeobox protein Hox-A1; Homeobox protein Hox-1F; HOXD1; HOX4; HOX4G; Homeobox protein Hox-D1; Homeobox protein Hox-GG
Background	This gene belongs to the homeobox family of genes. The homeobox genes encode a highly conserved family of transcription factors that play an important role in morphogenesis in all multicellular organisms. Mammals possess four similar homeobox gene clusters, HOXA, HOXB, HOXC and HOXD, located on different chromosomes, consisting of 9 to 11 genes arranged in tandem. This gene is one of several homeobox HOXB genes located in a cluster on chromosome 17. [provided by RefSeq, Jul 2008],



Immunohistochemistry analysis of paraffin-embedded human testis tissue, using HOXA1/B1/D1 Antibody. The picture on the right is blocked with the synthesized peptide.