

eIF4E3 rabbit pAb**Cat#: orb768625 (Manual)**

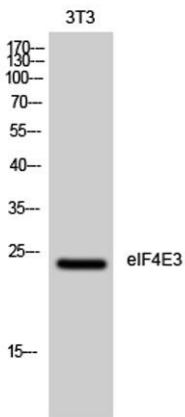
For research use only. Not intended for diagnostic use.

Product Name	eIF4E3 rabbit pAb
Host species	Rabbit
Applications	WB;ELISA
Species Cross-Reactivity	Human;Mouse;Rat
Recommended dilutions	Western Blot: 1/500 - 1/2000. ELISA: 1/10000. Not yet tested in other applications.
Immunogen	The antiserum was produced against synthesized peptide derived from human EIF4E3. AA range:141-190
Specificity	eIF4E3 Polyclonal Antibody detects endogenous levels of eIF4E3 protein.
Formulation	Liquid in PBS containing 50% glycerol, 0.5% BSA and 0.02% sodium azide..
Storage	Store at -20°C. Avoid repeated freeze-thaw cycles.
Protein Name	Eukaryotic translation initiation factor 4E type 3
Gene Name	EIF4E3
Cellular localization	cytoplasm,cytosol,mRNA cap binding complex,
Purification	The antibody was affinity-purified from rabbit antiserum by affinity-chromatography using epitope-specific immunogen.
Clonality	Polyclonal

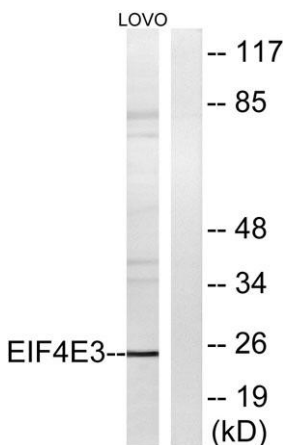
Concentration	1 mg/ml
Observed band	24kD
Human Gene ID	317649
Human Swiss-Prot Number	Q8N5X7
Alternative Names	EIF4E3; Eukaryotic translation initiation factor 4E type 3; eIF-4E type 3; eIF-4E3; eIF4E type 3; eIF4E-3

Background

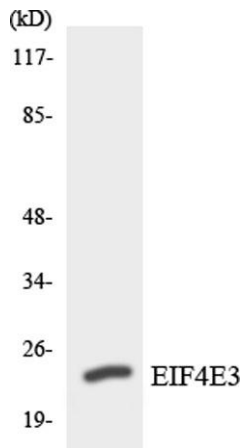
EIF4E3 belongs to the EIF4E family of translational initiation factors that interact with the 5-prime cap structure of mRNA and recruit mRNA to the ribosome (Joshi et al., 2004 [PubMed 15153109]).[supplied by OMIM, Mar 2008],



Western Blot analysis of 3T3 cells using eIF4E3 Polyclonal Antibody diluted at 1:1000



Western blot analysis of lysates from LOVO cells, using EIF4E3 Antibody. The lane on the right is blocked with the synthesized peptide.



Western blot analysis of the lysates from HepG2 cells using EIF4E3 antibody.