

HLA-H rabbit pAb

Cat#: orb768617 (Manual)

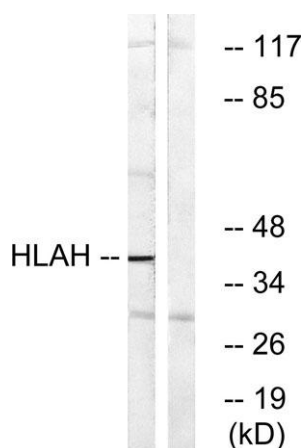
For research use only. Not intended for diagnostic use.

Product Name	HLA-H rabbit pAb
Host species	Rabbit
Applications	WB;ELISA
Species Cross-Reactivity	Human
Recommended dilutions	Western Blot: 1/500 - 1/2000. ELISA: 1/10000. Not yet tested in other applications.
Immunogen	The antiserum was produced against synthesized peptide derived from human HLAH. AA range:71-120
Specificity	HLA-H Polyclonal Antibody detects endogenous levels of HLA-H protein.
Formulation	Liquid in PBS containing 50% glycerol, 0.5% BSA and 0.02% sodium azide..
Storage	Store at -20°C. Avoid repeated freeze-thaw cycles.
Protein Name	Putative HLA class I histocompatibility antigen alpha chain H
Gene Name	HLA-H
Cellular localization	Cell membrane ; Single-pass membrane protein .
Purification	The antibody was affinity-purified from rabbit antiserum by affinity-chromatography using epitope-specific immunogen.
Clonality	Polyclonal

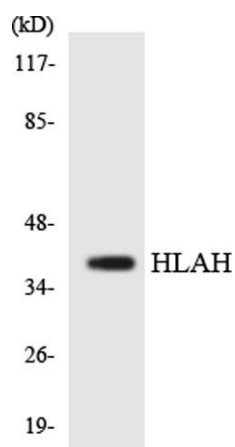
Concentration	1 mg/ml
Observed band	40kD
Human Gene ID	3136
Human Swiss-Prot Number	P01893
Alternative Names	HLA-H; HLAH; Putative HLA class I histocompatibility antigen; alpha chain H; HLA-12.4; HLA-AR; MHC class I antigen H

Background

This major histocompatibility complex gene represents a transcribed pseudogene, possibly derived from HLA-A. This gene displays extensive variation. [provided by RefSeq, May 2010].



Western blot analysis of lysates from LOVO cells, using HLAH Antibody. The lane on the right is blocked with the synthesized peptide.



Western blot analysis of the lysates from HT-29 cells using HLAH antibody.