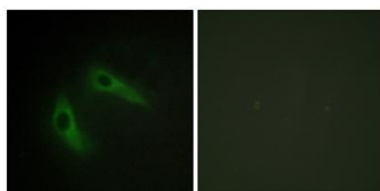


KChIP1 rabbit pAb**Cat#: orb768610 (Manual)**

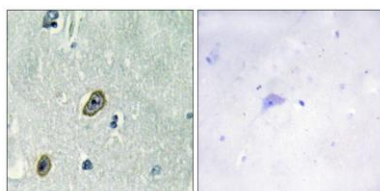
For research use only. Not intended for diagnostic use.

Product Name	KChIP1 rabbit pAb
Host species	Rabbit
Applications	IHC;IF;ELISA
Species Cross-Reactivity	Human;Mouse;Rat
Recommended dilutions	Immunohistochemistry: 1/100 - 1/300. Immunofluorescence: 1/200 - 1/1000. ELISA: 1/20000. Not yet tested in other applications.
Immunogen	The antiserum was produced against synthesized peptide derived from human KCIP1. AA range:1-50
Specificity	KChIP1 Polyclonal Antibody detects endogenous levels of KChIP1 protein.
Formulation	Liquid in PBS containing 50% glycerol, 0.5% BSA and 0.02% sodium azide..
Storage	Store at -20°C. Avoid repeated freeze-thaw cycles.
Protein Name	Kv channel-interacting protein 1
Gene Name	KCNIP1
Cellular localization	Cell membrane ; Peripheral membrane protein . Cytoplasm . Cell projection, dendrite .
Purification	The antibody was affinity-purified from rabbit antiserum by affinity-chromatography using epitope-specific immunogen.
Clonality	Polyclonal

Concentration	1 mg/ml
Observed band	
Human Gene ID	30820
Human Swiss-Prot Number	Q9NZI2
Alternative Names	KCNIP1; KCHIP1; VABP; Kv channel-interacting protein 1; KChIP1; A-type potassium channel modulatory protein 1; Potassium channel-interacting protein 1; Vesicle APC-binding protein
Background	This gene encodes a member of the family of cytosolic voltage-gated potassium (Kv) channel-interacting proteins (KCNIPs), which belong to the neuronal calcium sensor (NCS) family of the calcium binding EF-hand proteins. They associate with Kv4 alpha subunits to form native Kv4 channel complexes. The encoded protein may regulate rapidly inactivating (A-type) currents, and hence neuronal membrane excitability, in response to changes in the concentration of intracellular calcium. Alternative splicing results in multiple transcript variants encoding different isoforms. [provided by RefSeq, May 2013],



Immunofluorescence analysis of HeLa cells, using KCHIP1 Antibody. The picture on the right is blocked with the synthesized peptide.



Immunohistochemistry analysis of paraffin-embedded human brain tissue, using KCHIP1 Antibody. The picture on the right is blocked with the synthesized peptide.



Explore. Bioreagents.

www.biorbyt.com

Biorbyt Ltd
7 Signet Court, Swann Road, Cambridge, CB5 8LA. United Kingdom
Email: info@biorbyt.com | Phone: +44 (0)1223 859-353 | Fax: +44 (0)1223 280-240

Biorbyt LLC
68 TW Alexander Drive, Durham, NC 27709. United States
Email: info@biorbyt.com | Phone: +1 (415) 906-5211 | Fax: +1 (415) 651-8558