

EMR2 rabbit pAb**Cat#: orb768608 (Manual)**

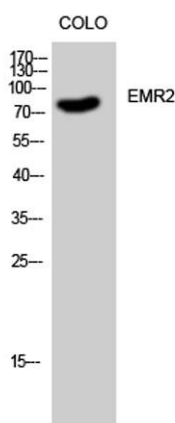
For research use only. Not intended for diagnostic use.

Product Name	EMR2 rabbit pAb
Host species	Rabbit
Applications	WB;IF;ELISA
Species Cross-Reactivity	Human
Recommended dilutions	Western Blot: 1/500 - 1/2000. Immunofluorescence: 1/200 - 1/1000. ELISA: 1/20000. Not yet tested in other applications.
Immunogen	The antiserum was produced against synthesized peptide derived from human EMR2. AA range:765-814
Specificity	EMR2 Polyclonal Antibody detects endogenous levels of EMR2 protein.
Formulation	Liquid in PBS containing 50% glycerol, 0.5% BSA and 0.02% sodium azide..
Storage	Store at -20°C. Avoid repeated freeze-thaw cycles.
Protein Name	EGF-like module-containing mucin-like hormone receptor-like 2
Gene Name	EMR2
Cellular localization	Cell membrane ; Multi-pass membrane protein. Cell projection, ruffle membrane ; Multi-pass membrane protein. Localized at the leading edge of migrating cells. .
Purification	The antibody was affinity-purified from rabbit antiserum by affinity-chromatography using epitope-specific immunogen.

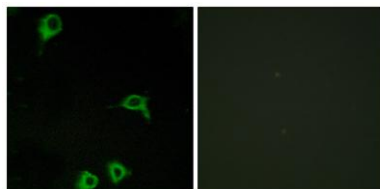
Clonality	Polyclonal
Concentration	1 mg/ml
Observed band	85kD
Human Gene ID	30817
Human Swiss-Prot Number	Q9UHX3
Alternative Names	EMR2; EGF-like module-containing mucin-like hormone receptor-like 2; EGF-like module receptor 2; CD antigen CD312

Background

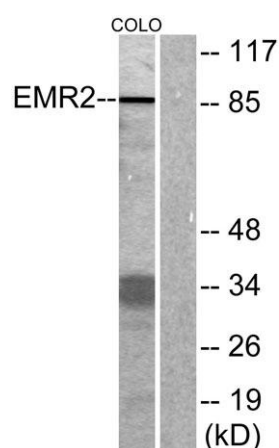
This gene encodes a member of the class B seven-span transmembrane (TM7) subfamily of G-protein coupled receptors. These proteins are characterized by an extended extracellular region with a variable number of N-terminal epidermal growth factor-like domains coupled to a TM7 domain via a mucin-like spacer domain. The encoded protein is expressed mainly in myeloid cells where it promotes cell-cell adhesion through interaction with chondroitin sulfate chains. This gene is situated in a cluster of related genes on chromosome 19. Alternatively spliced transcript variants encoding multiple isoforms have been observed for this gene. [provided by RefSeq, Aug 2012],



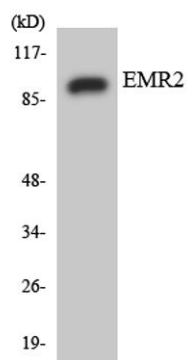
Western Blot analysis of COLO cells using EMR2 Polyclonal Antibody



Immunofluorescence analysis of COS7 cells, using EMR2 Antibody. The picture on the right is blocked with the synthesized peptide.



Western blot analysis of lysates from COLO cells, using EMR2 Antibody. The lane on the right is blocked with the synthesized peptide.



Western blot analysis of the lysates from HUVEC cells using EMR2 antibody.