

HDAC1 (phospho Ser421) rabbit pAb**Cat#: orb768604 (Manual)**

For research use only. Not intended for diagnostic use.

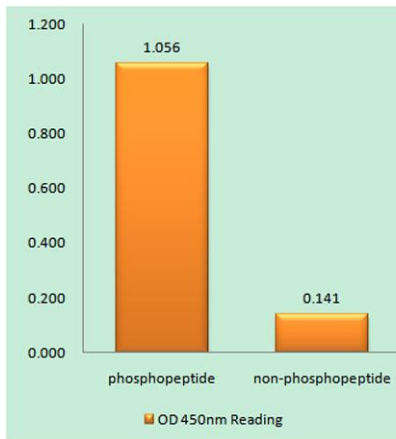
Product Name	HDAC1 (phospho Ser421) rabbit pAb
Host species	Rabbit
Applications	WB;IHC;IF;ELISA
Species Cross-Reactivity	Human;Mouse;Rat
Recommended dilutions	Western Blot: 1/500 - 1/2000. Immunohistochemistry: 1/100 - 1/300. ELISA: 1/5000. Not yet tested in other applications.
Immunogen	The antiserum was produced against synthesized peptide derived from human HDAC1 around the phosphorylation site of Ser421. AA range:387-436
Specificity	Phospho-HDAC1 (S421) Polyclonal Antibody detects endogenous levels of HDAC1 protein only when phosphorylated at S421.
Formulation	Liquid in PBS containing 50% glycerol, 0.5% BSA and 0.02% sodium azide..
Storage	Store at -20°C. Avoid repeated freeze-thaw cycles.
Protein Name	Histone deacetylase 1
Gene Name	HDAC1
Cellular localization	Nucleus .
Purification	The antibody was affinity-purified from rabbit antiserum by affinity-chromatography using epitope-specific immunogen.
Clonality	Polyclonal

Explore. Bioreagents.

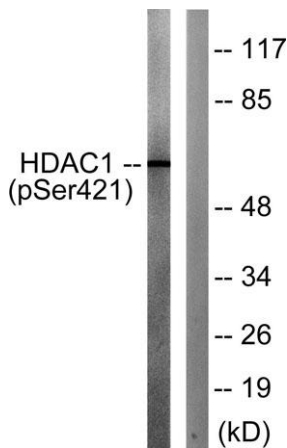
Concentration	1 mg/ml
Observed band	62kD
Human Gene ID	3065
Human Swiss-Prot Number	Q13547
Alternative Names	HDAC1; RPD3L1; Histone deacetylase 1; HD1

Background

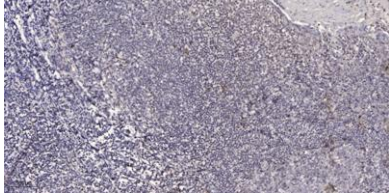
Histone acetylation and deacetylation, catalyzed by multisubunit complexes, play a key role in the regulation of eukaryotic gene expression. The protein encoded by this gene belongs to the histone deacetylase/acuc/apha family and is a component of the histone deacetylase complex. It also interacts with retinoblastoma tumor-suppressor protein and this complex is a key element in the control of cell proliferation and differentiation. Together with metastasis-associated protein-2, it deacetylates p53 and modulates its effect on cell growth and apoptosis. [provided by RefSeq, Jul 2008],



Enzyme-Linked Immunosorbent Assay (Phospho-ELISA) for Immunogen Phosphopeptide (Phospho-left) and Non-Phosphopeptide (Phospho-right), using HDAC1 (Phospho-Ser421) Antibody



Western blot analysis of lysates from Jurkat cells treated with EGF 200ng/ml 30', using HDAC1 (Phospho-Ser421) Antibody. The lane on the right is blocked with the phospho peptide.



Immunohistochemical analysis of paraffin-embedded human tonsil. 1, Antibody was diluted at 1:200(4° overnight). 2, Tris-EDTA,pH9.0 was used for antigen retrieval. 3,Secondary antibody was diluted at 1:200(room temperature, 45min).