

## Orexin R-1 rabbit pAb

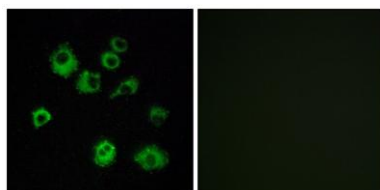
**Cat#: orb768601 (Manual)**

For research use only. Not intended for diagnostic use.

<b>Product Name</b>	Orexin R-1 rabbit pAb
<b>Host species</b>	Rabbit
<b>Applications</b>	IF;ELISA
<b>Species Cross-Reactivity</b>	Human;Mouse;Rat
<b>Recommended dilutions</b>	Immunofluorescence: 1/200 - 1/1000. ELISA: 1/20000. Not yet tested in other applications.
<b>Immunogen</b>	The antiserum was produced against synthesized peptide derived from human HCRTR1. AA range:298-347
<b>Specificity</b>	Orexin R-1 Polyclonal Antibody detects endogenous levels of Orexin R-1 protein.
<b>Formulation</b>	Liquid in PBS containing 50% glycerol, 0.5% BSA and 0.02% sodium azide..
<b>Storage</b>	Store at -20°C. Avoid repeated freeze-thaw cycles.
<b>Protein Name</b>	Orexin receptor type 1
<b>Gene Name</b>	HCRTR1
<b>Cellular localization</b>	Cell membrane ; Multi-pass membrane protein .
<b>Purification</b>	The antibody was affinity-purified from rabbit antiserum by affinity-chromatography using epitope-specific immunogen.
<b>Clonality</b>	Polyclonal

<b>Concentration</b>	1 mg/ml
<b>Observed band</b>	
<b>Human Gene ID</b>	3061
<b>Human Swiss-Prot Number</b>	O43613
<b>Alternative Names</b>	HCRT1; Orexin receptor type 1; Ox-1-R; Ox1-R; Ox1R; Hypocretin receptor type 1

**Background** The protein encoded by this gene is a G-protein coupled receptor involved in the regulation of feeding behavior. The encoded protein selectively binds the hypothalamic neuropeptide orexin A. A related gene (HCRT2) encodes a G-protein coupled receptor that binds orexin A and orexin B. [provided by RefSeq, Jan 2009],



**Immunofluorescence analysis of MCF7 cells, using HCRT1 Antibody. The picture on the right is blocked with the synthesized peptide.**