

Orexin R-1 rabbit pAb

Cat#: orb768600 (Manual)

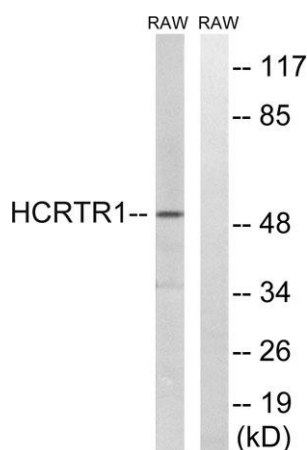
For research use only. Not intended for diagnostic use.

Product Name	Orexin R-1 rabbit pAb
Host species	Rabbit
Applications	WB;ELISA
Species Cross-Reactivity	Human;Mouse;Rat
Recommended dilutions	Western Blot: 1/500 - 1/2000. ELISA: 1/5000. Not yet tested in other applications.
Immunogen	The antiserum was produced against synthesized peptide derived from human HCRTR1. AA range:231-280
Specificity	Orexin R-1 Polyclonal Antibody detects endogenous levels of Orexin R-1 protein.
Formulation	Liquid in PBS containing 50% glycerol, 0.5% BSA and 0.02% sodium azide..
Storage	Store at -20°C. Avoid repeated freeze-thaw cycles.
Protein Name	Orexin receptor type 1
Gene Name	HCRTR1
Cellular localization	Cell membrane ; Multi-pass membrane protein .
Purification	The antibody was affinity-purified from rabbit antiserum by affinity-chromatography using epitope-specific immunogen.
Clonality	Polyclonal

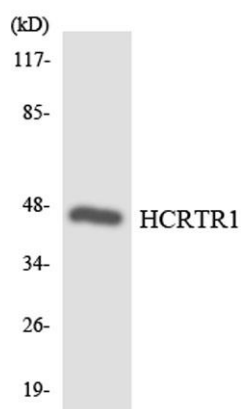
Concentration	1 mg/ml
Observed band	50kD
Human Gene ID	3061
Human Swiss-Prot Number	O43613
Alternative Names	HCRT1; Orexin receptor type 1; Ox-1-R; Ox1-R; Ox1R; Hypocretin receptor type 1

Background

The protein encoded by this gene is a G-protein coupled receptor involved in the regulation of feeding behavior. The encoded protein selectively binds the hypothalamic neuropeptide orexin A. A related gene (HCRT2) encodes a G-protein coupled receptor that binds orexin A and orexin B. [provided by RefSeq, Jan 2009],



Western blot analysis of lysates from RAW264.7 cells, using HCRT1 Antibody. The lane on the right is blocked with the synthesized peptide.



Western blot analysis of the lysates from HepG2 cells using HCRT1 antibody.