

Lck BP-1 rabbit pAb**Cat#: orb768599 (Manual)**

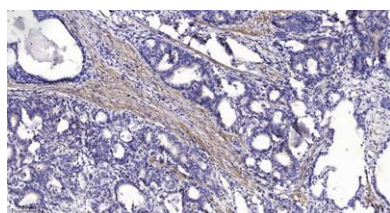
For research use only. Not intended for diagnostic use.

Product Name	Lck BP-1 rabbit pAb
Host species	Rabbit
Applications	WB;IHC
Species Cross-Reactivity	Human;Rat;Mouse;
Recommended dilutions	WB 1:500-2000;IHC-p 1:50-300
Immunogen	Synthesized peptide derived from Lck BP-1 . at AA range: 340-420
Specificity	Lck BP-1 Polyclonal Antibody detects endogenous levels of Lck BP-1 protein.
Formulation	Liquid in PBS containing 50% glycerol, 0.5% BSA and 0.02% sodium azide..
Storage	Store at -20°C. Avoid repeated freeze-thaw cycles.
Protein Name	Hematopoietic lineage cell-specific protein
Gene Name	HCLS1
Cellular localization	Membrane ; Peripheral membrane protein . Cytoplasm . Mitochondrion .
Purification	The antibody was affinity-purified from rabbit antiserum by affinity-chromatography using epitope-specific immunogen.
Clonality	Polyclonal

Concentration	1 mg/ml
Observed band	54kD
Human Gene ID	3059
Human Swiss-Prot Number	P14317
Alternative Names	HCLS1; HS1; Hematopoietic lineage cell-specific protein; Hematopoietic cell-specific LYN substrate 1; LckBP1; p75

Background

developmental stage: Expressed in early stage of myeloid and erythroid differentiation., function: Substrate of the antigen receptor-coupled tyrosine kinase. Plays a role in antigen receptor signaling for both clonal expansion and deletion in lymphoid cells. May also be involved in the regulation of gene expression., PTM: Phosphorylated by LYN; rapidly after cross-linking of surface IgM on B-cells., similarity: Contains 1 SH3 domain., similarity: Contains 4 cortactin repeats., subunit: Associates with the SH2 and SH3 domains of LCK. Binding to the LCK SH3 domain occurs constitutively, while binding to the LCK SH2 domain occurs only upon TCR stimulation. A similar binding pattern was observed with LYN, but not with FYN in which the FYN SH2 region associates upon TCR stimulation but the FYN SH3 region does not associate regardless of TCR stimulation. Directly associates with HAX1, through binding to its C-terminal region. Interacts with HS1BP3., tissue specificity: Expressed only in tissues and cells of hematopoietic origin.,



Immunohistochemical analysis of paraffin-embedded human Gastric adenocarcinoma. 1, Antibody was diluted at 1:200(4° overnight). 2, Tris-EDTA, pH9.0 was used for antigen retrieval. 3, Secondary antibody was diluted at 1:200(room temperature, 45min).