

HCF1 rabbit pAb

Cat#: orb768594 (Manual)

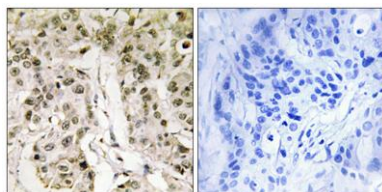
For research use only. Not intended for diagnostic use.

Product Name	HCF1 rabbit pAb
Host species	Rabbit
Applications	IHC;IF;WB;ELISA
Species Cross-Reactivity	Human;Mouse
Recommended dilutions	WB 1:500-2000 Immunohistochemistry: 1/100 - 1/300. ELISA: 1/20000. Not yet tested in other applications.
Immunogen	The antiserum was produced against synthesized peptide derived from human HCFC1. AA range:131-180
Specificity	HCF1 Polyclonal Antibody detects endogenous levels of HCF1 protein.
Formulation	Liquid in PBS containing 50% glycerol, 0.5% BSA and 0.02% sodium azide..
Storage	Store at -20°C. Avoid repeated freeze-thaw cycles.
Protein Name	Host cell factor 1
Gene Name	HCFC1
Cellular localization	Cytoplasm . Nucleus . HCFC1R1 modulates its subcellular localization and overexpression of HCFC1R1 leads to accumulation of HCFC1 in the cytoplasm (PubMed:12235138). Non-processed HCFC1 associates with chromatin. Colocalizes with CREB3 and CANX in the ER. .
Purification	The antibody was affinity-purified from rabbit antiserum by affinity-chromatography using epitope-specific immunogen.

Clonality	Polyclonal
Concentration	1 mg/ml
Observed band	208kD
Human Gene ID	3054
Human Swiss-Prot Number	P51610
Alternative Names	HCFC1; HCF1; HFC1; Host cell factor 1; HCF; HCF-1; C1 factor; CFF; VCAF; VP16 accessory protein

Background

This gene is a member of the host cell factor family and encodes a protein with five Kelch repeats, a fibronectin-like motif, and six HCF repeats, each of which contains a highly specific cleavage signal. This nuclear coactivator is proteolytically cleaved at one of the six possible sites, resulting in the creation of an N-terminal chain and the corresponding C-terminal chain. The final form of this protein consists of noncovalently bound N- and C-terminal chains. The protein is involved in control of the cell cycle and transcriptional regulation during herpes simplex virus infection. Alternatively spliced variants which encode different protein isoforms have been described; however, not all variants have been fully characterized. [provided by RefSeq, Jul 2008],



Immunohistochemistry analysis of paraffin-embedded human breast carcinoma tissue, using HCFC1 Antibody. The picture on the right is blocked with the synthesized peptide.