

HC-II rabbit pAb**Cat#: orb768593 (Manual)**

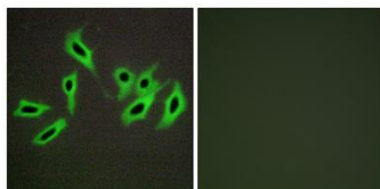
For research use only. Not intended for diagnostic use.

Product Name	HC-II rabbit pAb
Host species	Rabbit
Applications	WB;IHC;IF;ELISA
Species Cross-Reactivity	Human;Mouse;Rat
Recommended dilutions	Western Blot: 1/500 - 1/2000. Immunohistochemistry: 1/100 - 1/300. Immunofluorescence: 1/200 - 1/1000. ELISA: 1/5000. Not yet tested in other applications.
Immunogen	The antiserum was produced against synthesized peptide derived from human Heparin Cofactor II. AA range:41-90
Specificity	HC-II Polyclonal Antibody detects endogenous levels of HC-II protein.
Formulation	Liquid in PBS containing 50% glycerol, 0.5% BSA and 0.02% sodium azide..
Storage	Store at -20°C. Avoid repeated freeze-thaw cycles.
Protein Name	Heparin cofactor 2
Gene Name	SERPIND1
Cellular localization	extracellular region,extracellular space,extracellular exosome,
Purification	The antibody was affinity-purified from rabbit antiserum by affinity-chromatography using epitope-specific immunogen.
Clonality	Polyclonal

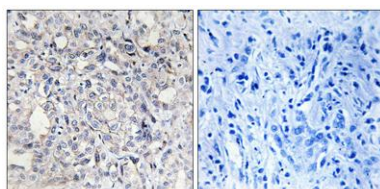
Concentration	1 mg/ml
Observed band	60kD
Human Gene ID	3053
Human Swiss-Prot Number	P05546
Alternative Names	SERPIND1; HCF2; Heparin cofactor 2; Heparin cofactor II; HC-II; Protease inhibitor leuserpin-2; HLS2; Serpin D1

Background

This gene belongs to the serpin gene superfamily. Serpins play roles in many processes including inflammation, blood clotting, and cancer metastasis. Members of this family have highly conserved secondary structures with a reactive center loop that interacts with the protease active site to inhibit protease activity. This gene encodes a plasma serine protease that functions as a thrombin and chymotrypsin inhibitor. The protein is activated by heparin, dermatan sulfate, and glycosaminoglycans. Allelic variations in this gene are associated with heparin cofactor II deficiency. [provided by RefSeq, Jul 2015],



Immunofluorescence analysis of HepG2 cells, using Heparin Cofactor II Antibody. The picture on the right is blocked with the synthesized peptide.



Immunohistochemistry analysis of paraffin-embedded human liver carcinoma tissue, using Heparin Cofactor II Antibody. The picture on the right is blocked with the synthesized peptide.



Explore. Bioreagents.

www.biorbyt.com