

**Granzyme B/H rabbit pAb****Cat#: orb768581 (Manual)**

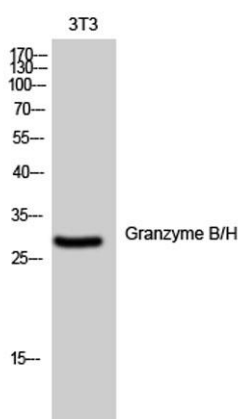
For research use only. Not intended for diagnostic use.

<b>Product Name</b>	Granzyme B/H rabbit pAb
<b>Host species</b>	Rabbit
<b>Applications</b>	WB;IHC;IF;ELISA
<b>Species Cross-Reactivity</b>	Human;Mouse;Rat
<b>Recommended dilutions</b>	Western Blot: 1/500 - 1/2000. Immunohistochemistry: 1/100 - 1/300. ELISA: 1/5000. Not yet tested in other applications.
<b>Immunogen</b>	The antiserum was produced against synthesized peptide derived from human Granzyme B. AA range:10-59
<b>Specificity</b>	Granzyme B/H Polyclonal Antibody detects endogenous levels of Granzyme B/H protein.
<b>Formulation</b>	Liquid in PBS containing 50% glycerol, 0.5% BSA and 0.02% sodium azide..
<b>Storage</b>	Store at -20°C. Avoid repeated freeze-thaw cycles.
<b>Protein Name</b>	Granzyme B/H
<b>Gene Name</b>	GZMB/GZMH
<b>Cellular localization</b>	Secreted . Cytolytic granule . Delivered into the target cell by perforin (PubMed:20038786). .
<b>Purification</b>	The antibody was affinity-purified from rabbit antiserum by affinity-chromatography using epitope-specific immunogen.
<b>Clonality</b>	Polyclonal

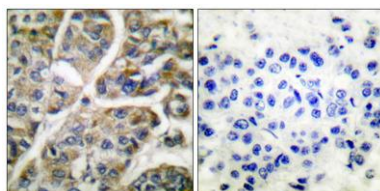
<b>Concentration</b>	1 mg/ml
<b>Observed band</b>	38kD
<b>Human Gene ID</b>	2999
<b>Human Swiss-Prot Number</b>	P10144/P20718
<b>Alternative Names</b>	GZMB; CGL1; CSPB; CTLA1; GRB; Granzyme B; C11; CTLA-1; Cathepsin G-like 1; CTSG1; Cytotoxic T-lymphocyte proteinase 2; Lymphocyte protease; Fragmentin-2; Granzyme-2; Human lymphocyte protein; HLP; SECT; T-cell serine protease 1-3E; GZMH; C

### Background

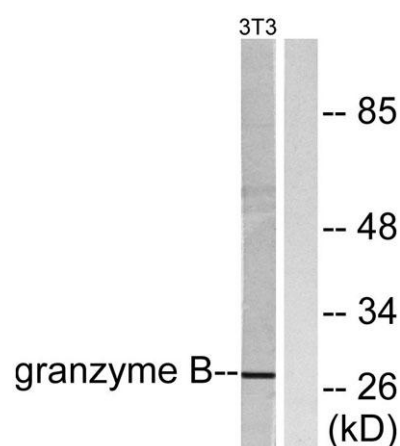
This gene encodes a member of the granzyme subfamily of proteins, part of the peptidase S1 family of serine proteases. The encoded preproprotein is secreted by natural killer (NK) cells and cytotoxic T lymphocytes (CTLs) and proteolytically processed to generate the active protease, which induces target cell apoptosis. This protein also processes cytokines and degrades extracellular matrix proteins, and these roles are implicated in chronic inflammation and wound healing. Expression of this gene may be elevated in human patients with cardiac fibrosis. [provided by RefSeq, Sep 2016],



**Western Blot analysis of 3T3 cells using Granzyme B/H Polyclonal Antibody diluted at 1:500**



**Immunohistochemistry analysis of paraffin-embedded human breast carcinoma tissue, using Granzyme B Antibody. The picture on the right is blocked with the synthesized peptide.**



Western blot analysis of lysates from NIH/3T3 cells, using Granzyme B Antibody. The lane on the right is blocked with the synthesized peptide.