

GRK 6 rabbit pAb

Cat#: orb768499 (Manual)

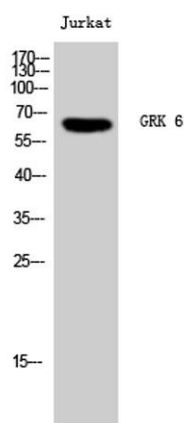
For research use only. Not intended for diagnostic use.

Product Name	GRK 6 rabbit pAb
Host species	Rabbit
Applications	WB;IF;ELISA
Species Cross-Reactivity	Human;Mouse;Rat
Recommended dilutions	Western Blot: 1/500 - 1/2000. Immunofluorescence: 1/200 - 1/1000. ELISA: 1/10000. Not yet tested in other applications.
Immunogen	The antiserum was produced against synthesized peptide derived from human GRK6. AA range:10-59
Specificity	GRK 6 Polyclonal Antibody detects endogenous levels of GRK 6 protein.
Formulation	Liquid in PBS containing 50% glycerol, 0.5% BSA and 0.02% sodium azide..
Storage	Store at -20°C. Avoid repeated freeze-thaw cycles.
Protein Name	G protein-coupled receptor kinase 6
Gene Name	GRK6
Cellular localization	Membrane; Lipid-anchor.
Purification	The antibody was affinity-purified from rabbit antiserum by affinity-chromatography using epitope-specific immunogen.
Clonality	Polyclonal

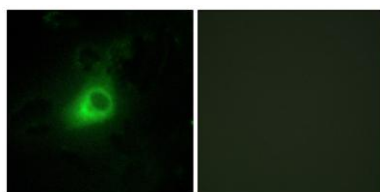
Concentration	1 mg/ml
Observed band	65kD
Human Gene ID	2870
Human Swiss-Prot Number	P43250
Alternative Names	GRK6; GPRK6; G protein-coupled receptor kinase 6; G protein-coupled receptor kinase GRK6

Background

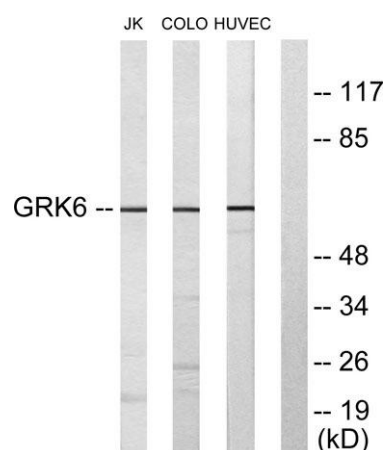
This gene encodes a member of the guanine nucleotide-binding protein (G protein)-coupled receptor kinase subfamily of the Ser/Thr protein kinase family. The protein phosphorylates the activated forms of G protein-coupled receptors thus initiating their deactivation. Several transcript variants encoding different isoforms have been described for this gene. [provided by RefSeq, Jul 2008],



Western Blot analysis of Jurkat cells using GRK 6 Polyclonal Antibody



Immunofluorescence analysis of HeLa cells, using GRK6 Antibody. The picture on the right is blocked with the synthesized peptide.



Western blot analysis of lysates from Jurkat, COLO205, and HUVEC cells, using GRK6 Antibody. The lane on the right is blocked with the synthesized peptide.