

## GRK 4 rabbit pAb

**Cat#: orb768497 (Manual)**

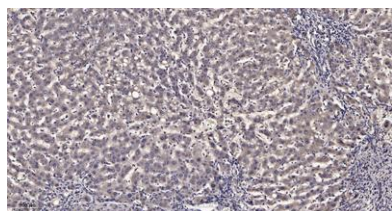
For research use only. Not intended for diagnostic use.

<b>Product Name</b>	GRK 4 rabbit pAb
<b>Host species</b>	Rabbit
<b>Applications</b>	IHC;IF;ELISA
<b>Species Cross-Reactivity</b>	Human;Rat;Mouse;
<b>Recommended dilutions</b>	Immunohistochemistry: 1/100 - 1/300. ELISA: 1/40000. Not yet tested in other applications.
<b>Immunogen</b>	Synthesized peptide derived from GRK 4 . at AA range: 10-90
<b>Specificity</b>	GRK 4 Polyclonal Antibody detects endogenous levels of GRK 4 protein.
<b>Formulation</b>	Liquid in PBS containing 50% glycerol, 0.5% BSA and 0.02% sodium azide..
<b>Storage</b>	Store at -20°C. Avoid repeated freeze-thaw cycles.
<b>Protein Name</b>	G protein-coupled receptor kinase 4
<b>Gene Name</b>	GRK4
<b>Cellular localization</b>	Cytoplasm. Cytoplasm, cell cortex. Both at the cell surface and dispersed in the cytoplasm under basal conditions. Receptor stimulation results in the internalization of GRK4 to the perinuclear area, where colocalization with DRD3 is observed strongly at 5 and 15 minutes. DRD3 and GRK4 colocalize in lipid rafts of renal proximal tubule cells.
<b>Purification</b>	The antibody was affinity-purified from rabbit antiserum by affinity-chromatography using epitope-specific immunogen.

<b>Clonality</b>	Polyclonal
<b>Concentration</b>	1 mg/ml
<b>Observed band</b>	
<b>Human Gene ID</b>	2868
<b>Human Swiss-Prot Number</b>	P32298
<b>Alternative Names</b>	GRK4; GPRK2L; GPRK4; G protein-coupled receptor kinase 4; G protein-coupled receptor kinase GRK4; ITI1

### Background

This gene encodes a member of the guanine nucleotide-binding protein (G protein)-coupled receptor kinase subfamily of the Ser/Thr protein kinase family. The protein phosphorylates the activated forms of G protein-coupled receptors thus initiating its deactivation. This gene has been linked to both genetic and acquired hypertension. Several transcript variants encoding different isoforms have been found for this gene. [provided by RefSeq, Nov 2013],



**Immunohistochemical analysis of paraffin-embedded human liver cancer. 1, Antibody was diluted at 1:200(4° overnight). 2, Tris-EDTA,pH9.0 was used for antigen retrieval. 3,Secondary antibody was diluted at 1:200(room temperature, 45min).**