

LOST1 rabbit pAb

Cat#: orb768496 (Manual)

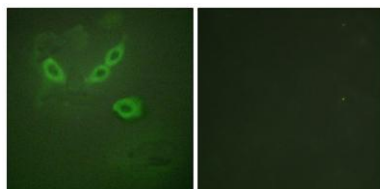
For research use only. Not intended for diagnostic use.

Product Name	LOST1 rabbit pAb
Host species	Rabbit
Applications	WB;ELISA;IHC
Species Cross-Reactivity	Human;Rat;Mouse;
Recommended dilutions	WB 1:500-2000;IHC-p 1:50-300; ELISA 2000-20000
Immunogen	The antiserum was produced against synthesized peptide derived from human TUSC5. AA range:1-50
Specificity	LOST1 Polyclonal Antibody detects endogenous levels of LOST1 protein.
Formulation	Liquid in PBS containing 50% glycerol, 0.5% BSA and 0.02% sodium azide..
Storage	Store at -20°C. Avoid repeated freeze-thaw cycles.
Protein Name	Tumor suppressor candidate 5
Gene Name	TUSC5
Cellular localization	Cell membrane ; Single-pass membrane protein . Endomembrane system ; Single-pass membrane protein . Cytoplasm, perinuclear region . Shifts from low-density microsome vesicles to the cell membrane upon insulin stimulation. .
Purification	The antibody was affinity-purified from rabbit antiserum by affinity-chromatography using epitope-specific immunogen.

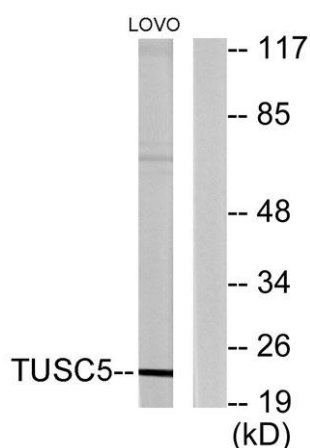
Clonality	Polyclonal
Concentration	1 mg/ml
Observed band	22kD
Human Gene ID	286753
Human Swiss-Prot Number	Q8IXB3
Alternative Names	TUSC5; IFITMD3; LOST1; Tumor suppressor candidate 5; Dispanin subfamily B member 1; DSPB1; Interferon-induced transmembrane domain-containing protein D3; Protein located at seventeen-p-thirteen point three 1

Background

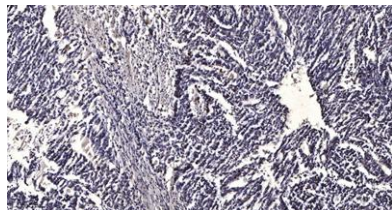
developmental stage:Expressed in fetal brain.,function:May be involved in fat metabolism.,similarity:Belongs to the CD225 family.,tissue specificity:Expressed at high levels in heart, mammary gland, adrenal gland, stomach, smooth muscle and skeletal muscle, and at lower levels in brain and lung. Strongly down-regulated in lung cancer tissues, due to hypermethylation of the corresponding locus.,



Immunofluorescence analysis of HeLa cells, using TUSC5 Antibody. The picture on the right is blocked with the synthesized peptide.



Western blot analysis of lysates from LOVO cells, using TUSC5 Antibody. The lane on the right is blocked with the synthesized peptide.



Immunohistochemical analysis of paraffin-embedded human Gastric adenocarcinoma. 1, Antibody was diluted at 1:200(4° overnight). 2, Tris-EDTA,pH9.0 was used for antigen retrieval. 3,Secondary antibody was diluted at 1:200(room temperature, 45min).