

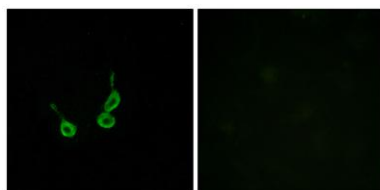
GPR150 rabbit pAb**Cat#: orb768487 (Manual)**

For research use only. Not intended for diagnostic use.

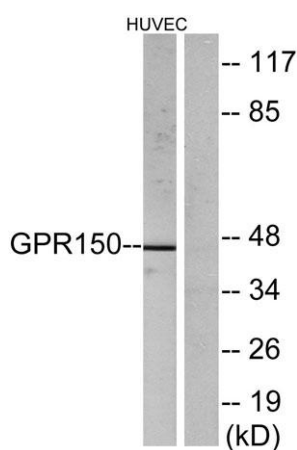
Product Name	GPR150 rabbit pAb
Host species	Rabbit
Applications	WB;IF;ELISA
Species Cross-Reactivity	Human;Rat;Mouse;
Recommended dilutions	Western Blot: 1/500 - 1/2000. Immunofluorescence: 1/200 - 1/1000. ELISA: 1/10000. Not yet tested in other applications.
Immunogen	The antiserum was produced against synthesized peptide derived from human GPR150. AA range:361-410
Specificity	GPR150 Polyclonal Antibody detects endogenous levels of GPR150 protein.
Formulation	Liquid in PBS containing 50% glycerol, 0.5% BSA and 0.02% sodium azide..
Storage	Store at -20°C. Avoid repeated freeze-thaw cycles.
Protein Name	Probable G-protein coupled receptor 150
Gene Name	GPR150
Cellular localization	Cell membrane; Multi-pass membrane protein.
Purification	The antibody was affinity-purified from rabbit antiserum by affinity-chromatography using epitope-specific immunogen.
Clonality	Polyclonal

Concentration	1 mg/ml
Observed band	46kD
Human Gene ID	285601
Human Swiss-Prot Number	Q8NGU9
Alternative Names	GPR150; Probable G-protein coupled receptor 150

Background function:Orphan receptor.,similarity:Belongs to the G-protein coupled receptor 1 family.,



Immunofluorescence analysis of HepG2 cells, using GPR150 Antibody. The picture on the right is blocked with the synthesized peptide.



Western blot analysis of lysates from HUVEC cells, using GPR150 Antibody. The lane on the right is blocked with the synthesized peptide.